

On the road

WESTERN VICTORIA
AND MELBOURNE

TOUR GUIDE

1 KANIVA 2 KY VALLEY 3 BENDIGO 4 MALDON 5 KYNETON
6 BALLARAT 7 BALLARAT 8 BUNINYONG 9 NULLAWARRE 10 GISBORNE
11 PASCOE VALE 12 MOONEE PONDS 13 MOONEE PONDS 14 FAIRFIELD
15 CAMBERWELL 16 OAKLEIGH 17 BLACKBURN 18 BORONIA

MELBOURNE

1. Kaniva LITTLE DESERT QUILTS



Where's Kaniva: In the West Wimmera Shire in western Victoria, near the South Australian border. Kaniva is about half way between Adelaide and Melbourne on the Western Highway. It's the first (or last) town in Victoria, depending on which way you happen to be travelling.

Where in Kaniva: 2204 Kaniva-Edenhope Road. Little Desert Quilts is not in the township of Kaniva, it's on a farming property 22km south, down the Kaniva-Edenhope Road in the middle of The Little Desert, surrounded by national park.

Who plays host: Fleur Maddern

Worth visiting because: Little Desert Quilts is a unique patchwork store, stocking an extensive range of novelty fabrics, specialising in farm, transport (cars, trucks, tractors, motorbikes etc), food and boys' themes. I have over 1,600 bolts in store to choose from. Each year, I run a designer challenge, which is always a lot of fun, so ask me to find out more. Being the only patchwork shop in the West Wimmera shire, I have unique trading hours – if I'm home, the shop is open: just ring to make an appointment.

What we recommend: I just can't go past the I Spy packs and pre-cut squares. They're available as packs of 50 different 6½in fabric squares for \$30, plus p&h, 50 different 3½in fabric squares for \$7.50 plus p&h and you can also request a selection made up 'for boys' or 'for girls'.

Address: 2204 Kaniva-Edenhope Road, Kaniva, Victoria, 3419

Phone: (03) 5392 2992

Email: littledesertquilts@skymesh.com.au

Facebook: www.facebook.com/pages/Little-Desert-Quilts/195560660567211

2. *Ky Valley* CATHARINA'S VINTAGE STITCHES



Where's Ky Valley: Ky Valley is just a three-minute drive out of Kyabram, heading towards Echuca.

Where in Ky Valley: We are located on 17 acres with beautiful gardens and a few cows. To find us, just drive into Roberts Lane, which is off Palmer Road, over the little bridge, then turn to your right, follow the lane through the big green hedge and there we are in our own little hideaway!

Who plays host: Host Catharina Sudholz, and quite often most of her family are around too, including her daughter Simone and any of her six grandchildren (the youngest being just a few weeks old).

Worth visiting because: I offer a wide range of products, from fabrics through to needles. I have plenty of Tilda ranges and will be more than happy to recommend joining the Tilda club I run, if you can't get enough of Tilda! You'll also find a large assortment of antique florals and a generous selection of threads. I specialise in stitcheries, from beginners through to advanced, with the majority being my own designs – it's turned into quite a big collection! You might like to join my Stitch and Chat day on Tuesdays, which runs from 10am to 3pm – just bring any project that you're working on and finish it in the company of a great group of ladies, and I am there to help with any advice that you may need. It's a really great time to finish those UFOs. Down the track, I'll be running a few workshops with other designers and some small projects that can be completed over a day, weekend or over a few nights, so check on the website for my class list. The store is open 9.30am to 5pm, Tuesday to Thursday, and open by appointment every other day. Call first to make sure I'm in.

What we recommend: I have lots of kits and new designs, like my new quilt design, *Coco Forever* – patterns are priced at \$30.

Address: 41 Roberts Lane, Ky Valley, Vic 3621

Phone: 0409 700 385

Email: catharinas48@gmail.com

Website: www.catharinasvintagestitches.com.au

3. *Bendigo* BENDIGO WOOLLEN MILLS

Where's Bendigo: It is about one and a half hours' drive north of Melbourne.

Where in Bendigo: 4 Lansell Street. If you are coming from Melbourne, head through town, past the fountain, follow the tram tracks through the main street, turn right as if heading to the Tram Museum, and we are just around the corner.

Who plays host: Owned by Colin Walker. Ann can usually be found in the shop and is very helpful with any questions.

Worth visiting because: We have a large selection of yarns, ranging from 2 ply to 12 ply, using luxurious fibre blends and with more than 170 colours to choose from. You can always find the perfect yarn for any item. We have patterns and accessories – everything you need from the start to the finish of your project. Our yarns come in large 200g balls, which means fewer joins for ease of knitting. We've recently released a new Limited Edition yarn, so pop in and see what all the buzz is about. Our factory shop is open 9am to 5pm Monday to Friday and 10am to 3pm Saturday and public holidays.

What we recommend: The Bargain Room is a must see for anybody who comes into the shop. It's full of end-of-run yarns: you might get a shade or yarn you've never seen before.

Address: 4 Lansell Street, Bendigo, Vic 3550

Phone: (03) 5442 4600 **Fax:** (03) 5442 2918



Email: info@bendigowoollenmills.com.au

Website: www.bendigowoollenmills.com.au

4. Maldon THE VILLAGE PATCH

Where's Maldon: Historic Maldon is just one and a half hours north of Melbourne and 30 minutes west of Bendigo.

Where in Maldon: 49 High Street. We're just opposite the Maldon Lolly Shop and the Christmas Shop. The store is light and bright in the original 1910 Freemasons Hall with its airy ceilings. It's part of the National Trust-classified Maldon village landscape.

Who plays host: Lee and Nicole are the 'mad' quilters behind the counter – a mother/daughter tag team! Between the two of us, we make all of the quilt samples in store and can offer advice if required.

Worth visiting because: We carry an extensive collection of fabrics, widebacks, books, threads, patterns and kits with more than 3,000 quilting fabrics in stock at \$15 per metre. A quilting service is available in the store to finish all those quilt tops, and we have Thursday night workshops, where there's usually more chat and laughter than stitching going on. We're open every day except Tuesdays from 10am-5pm. Bus groups are more than welcome, and we offer a generous group discount of 20 per cent for groups who book prior to their visit.

What we recommend: For new mothers and grandmas, we have a large range of cot panels and bright, cheery children's prints and some great patterns and kits for soft toys by Quilting Gems, Rivendale Collection and Simply Country Gifts.



Address: 49 High Street, Maldon, Vic 3463

Phone: (03) 5475 2391

Email: enquiries@villagepatch.com.au

Website: www.villagepatch.com.au

5. Kyneton PICK UP STITCHES



Where's Kyneton: Heading south from Bendigo on the Calder Freeway, Kyneton is on the way to Macedon and Gisborne.

Where in Kyneton: 30 Piper Street. We're in the main shopping street of Kyneton, with some beautiful old buildings on the street.

Who plays host: Sharon Boxshall

Worth visiting because: We absolutely love all things knitting and patchwork and, after moving to a larger premises, we're lucky to have three rooms filled with wonderful fabrics! We like to think of our store as the craft equivalent of a lolly shop, where you're sure to be filled with that sense of excitement when you find your dream fabric. Not only do we have a wonderful range of fabrics, but we also have a fantastic selection of wool products, including Noro, Heirloom, Sirdar Sublime and speciality sock yarns. We have an extensive selection of patterns and books on patchwork, quilting, felting, knitting, crochet and sewing, so whatever project you're wanting to start on, inspiration is always at hand. Stitch and Sew days and evenings are held throughout the year and are always popular, so why not join in the fun?

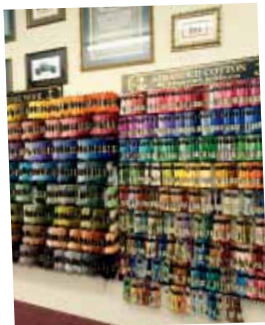
What we recommend: The AFL Beanie and Scarf Easy Knit Kits with AFL and team logos to sew on. Machine washable, 12ply.

Address: 30 Piper Street, Kyneton Vic 3444

Phone: (03) 5422 6614

Email: pickupstitches@bigpond.com

6. Ballarat SOVEREIGN NEEDLEWORK



Where's Ballarat: Approximately one hour northwest of Melbourne on the Western Highway.

Where in Ballarat: 215 Mair Street. We're one block from the train station and one block from Sturt Street, which is the main street of Ballarat.

Who plays host: Elaine Quirk, with the help of Judy Ashmore and sometimes Elaine's husband, Chris, helps out when he's not at work.

Worth visiting because: There is really nothing else like Sovereign Needlework in the area. Our walls are adorned with a wonderful variety of threads. We also have a range of cross-stitch kits and fabric so you can create your own designs, trammed tapestries, wool, needles and plenty of patterns for cross stitch and knitting. You'll also find lots and lots of books to choose from, so you'll never struggle to find inspiration. Our kettle is always on, so feel free to drop in and have plenty of fun browsing.

What we recommend: We just love stitcheries, and our wide range of sewing needles and other stitching products will indulge any passionate stitcher's needs.

Address: 215 Mair Street, Ballarat, Vic 3350

Phone: (03) 5332 1782

7. Ballarat THE CRAFTY SQUIRREL

Where's Ballarat: Famous for its goldfields, Ballarat is located in central Victoria, just over an hour's drive from Melbourne.

Where in Ballarat: Corner Errard and Urquhart Streets. Located in an old corner store built in 1885 in Ballarat Central, it's hard to miss!

Who plays host: The Crafty Squirrel is the working shop and studio of designer/maker Morgan Wills.

Worth visiting because: My 20 plus years of collecting and crafting culminate in this eclectic store, The Crafty Squirrel – a nostalgic step back in time fused with modern cute whimsy. The shop is the public front of my working studio, which is where I create the many products available in store. I also spend time scouring the globe, sourcing unique items that you don't often see, making The Crafty Squirrel a unique retail experience. Also in stock is a wonderful mix of gifts, cool craft kits, homewares, vintage treasures and gorgeous haberdashery. Visitors make the journey from all over Australia to beautiful Ballarat simply to enjoy the treasures that I have in store. I also take the Crafty Squirrel on the road, with the next destination being the Craft and Quilt Fair, from 23 to 26 July at the Melbourne Convention and Exhibition Centre, South Wharf. The store is open Thurs-Fri, 10am-5pm and Sat 10am-4pm. Group visits outside of these hours are by appointment only.



What we recommend: I particularly love cute Japanese and Korean stationery, French sewing notions, DIY terrarium goodies, Kewpie dolls and Sonny Angels, plus lots of vintage aprons, souvenir tea towels and crafty kits and gifts.

Address: Cnr Errard and Urquhart Streets, Ballarat Central, Vic 3350

Phone: (03) 5331 4548

Email: info@thecraftysquirrel.com.au

Website: www.thecraftysquirrel.com.au

8. Buninyong SEW SPECIAL

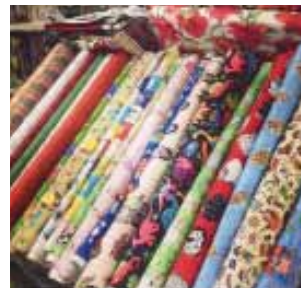
Where's Buninyong: Just 10 mins from Ballarat. Come by car or catch the bus from Ballarat. The bus stops just across the road from the shop.

Where in Buninyong: 320 Learmonth Street. We can be found right next door to the Buninyong Bakery.

Who plays host: Owned by Gael Fennell; all the hard work is done by Jenny, Paula, Belinda and Lindy.

Worth visiting because: What started out as a small haberdashery shop in Buninyong has grown to be the go-to place for buttons. We have more than 7,000 buttons in stock. We pride ourselves on being able to provide for any project, and with the largest range of buttons to choose from in country Victoria, it's not hard to find what you need. We also stock ranges from Nutex quilting fabrics, a great range of haberdashery and wool. Larger groups and bus tours are welcome. Don't forget to visit our website and keep up to date with the store on our Facebook page, www.facebook.com/sewspecialbuttonheaven.

What we recommend: Our passion is buttons (as you can see from our photos) but we also have a great range of fun fabric for the young at heart. We have recently introduced a selection of wool and specialty yarns into our range of haberdashery and gifts. If you plan to visit for our buttons, bring your project with you and we will be only too happy to help find that certain button that will bring your work alive.



Address: 320 Learmonth Street, Buninyong, Vic 3357

Phone: (03) 5341 3050 **Email:** info@sewspecial.net.au

Website: www.buttonheaven.com.au

9. Nullawarre ELM GROVE PATCHWORK



Where's Nullawarre: Depending which way you are travelling, Nullawarre is the first/last town on the iconic Great Ocean Road in Victoria. Situated at the southern end, it is a pleasant 20 minutes' drive from Warrnambool.

Where in Nullawarre: 2211 Timboon-Nullawarre Road. At the centre of our small town, turn onto the Timboon-Nullawarre Road. You will find me a short 200m on the right-hand side. Look for the house with the red door.

Who plays host: Lenora Jenkins. I open the store Wed-Fri 11am-4pm and Sat 1pm-4pm or by prior appointment.

Worth visiting because: I have a great love of appliqué and traditional quilting, and my store features a strong presence

of reproduction fabric. You will find ranges designed by Judie Rothermel, Paula Barnes, Barbara Brackman and Mary Koval, along with a selection of adorable 1930s prints. This month, I'll be receiving a delivery of Liberty Tana Lawn fabrics, and I can't wait to design some lovely small projects using them. I stock a wide selection of traditional quilt patterns and books, Aurifil thread, felted woollen fabric, English paper piecing papers and notions, especially those needed for appliqué and small piecing. My store is perfect for a stop-off when you're taking a holiday along the Great Ocean Road. You may even be able to coordinate your visit with one of my visiting tutors, such as Di Ford Hall or Michelle Yeo.

What we recommend: Some of our most popular products are our precut bundles. Not only do we cut fat eighth bundles of each range as it arrives, we also make colour cubes: little boxes containing 10 different fabrics in the same colour way. I know that reproduction quilts require small pieces of lots of fabrics, so I like to make it easy with my precut bundles and loose cut fabric. These bundles also make excellent gifts.

Address: 2211 Timboon-Nullawarre Road, Nullawarre, Vic 3268

Phone: 0427 819 105 **Email:** lenora@elmgrovepatchwork.com.au

Website: www.elmgrovepatchwork.com.au

Blog: www.elmgrovepatchwork.typepad.com

10. Gisborne PATCH N QUILT



Where's Gisborne: North west of Melbourne, Gisborne is a popular town to visit in the Macedon region.

Where in Gisborne: Shop 4, Nexus Centre, 14 Prince Street. My new bigger and brighter store is in what I call the Paris end of Gisborne. We have plenty of parking.

Who plays host: Mary Kelly is the owner of the store and is assisted by Carmel and Janine.

Worth visiting because: In our new, bigger premises, we have been able to increase our stock, which has been a lot of fun!

While we don't have a particular style with our fabric selection, more than anything it is just a combination of all of the fabrics that Mary loves! You'll find lots of brights, reproductions, pretty florals, tone on tones, retro prints and lots more. Apart from patterns, books, embroidery threads and haberdashery items such as zips, interfacings and cottons, we stock wool felt, blanketing, varieties of batting and widebacks. We have wool ranges from Zauberball, Patons and Sirdar, and more varieties will be available soon. Sewing-machine repairs are also available with a quick turnaround. We're lucky to be in such a wonderful shop with a beautiful new big separate classroom. Classes are offered in a wide variety of techniques, and with several regular teachers, Janine, Carol and Marina. We also have some renowned tutors who teach in store: just visit the website for our updated class list.

What we recommend: Jan Kerton of Windflower Embroidery is a regular tutor at Patch n Quilt. Jan's happy disposition and extensive knowledge of all things embroidery mean that her classes book out very quickly. Irene Blanck, of Focus on Quilts, has recently had a book published by Quiltmania, so once again we are pleased to have Irene continue teaching here at the shop.

Address: Shop 4, Nexus Centre, 14 Prince Street, Gisborne, Vic 3437

Phone: (03) 5420 7333 **Email:** info@patchnquilt.com.au

Website: www.patchnquilt.com.au

11. Pascoe Vale PATCHWORKS UNLIMITED

Where's Pascoe Vale: 25 minutes from Tullamarine Airport and half an hour north of Melbourne city.

Where in Pascoe Vale: 25 Pascoe Street. We are located in a small group of shops, almost opposite Westbreen Primary School.

Who plays host: Pauline Baber and Bronwen Kolotelo. Pauline originally opened the shop with Gael Koenders and on Gael's sudden passing, in 2014, her daughter, Bronwen, has taken on a role as co-owner.

Worth visiting because: We are a fantastic shop that has been open now for over 20 years. Our colour palette is bright, which is reflected in our range of fabrics, including a great range of Japanese fabrics, children's fabrics and a wide selection of modern prints and designs. If you're after a new project, we have many original patchwork patterns that have been designed by Pauline and Gael and most of our quilts are unique to Patchworks Unlimited. We stock a great range of haberdashery items, as well as patterns from talented artists within the patchwork and quilting world. We're open Tuesday to Saturday and run classes during this time. Subscribers to our newsletters get notification of upcoming sales, as well as classes and spot sales. We welcome bus tours and new customers, and we are also happy to mail orders to customers interstate.

What we recommend: We can't go past our own range of patterns and designs, which incorporate not only modern fabrics



and patterns, but also look wonderful in treasured stash fabrics. Come to our Sit and Sew sessions to meet other patchworkers and our local crew, who are very welcoming and always ready to help out.

Address: 25 Pascoe Street, Pascoe Vale, Vic 3044

Phone: (03) 9300 4011

Email: patchworksunlimited@gmail.com

Website: www.patchworksunlimited.com.au

12. *Moonee Ponds* TRANQUILITY CRAFTS 'N SUPPLIES

Where's Moonee Ponds: Moonee Ponds is a suburb of Melbourne, and just a short train ride from the city.

Where in Moonee Ponds: 37 Holmes Road. We're a short walk from the train station. If you're driving to the store, parking is available across the road or in the carpark on the corner.

Who plays host: You will be greeted by the owner, Joanne, who has many years of experience and is ready to help you.

Worth visiting because: We are a shop well worth visiting especially if you're looking for inspiration, as the walls and shelves are lined with completed samples to get you inspired. You'll find in excess of 2,000 bolts of patchwork fabric, linens and Aida cloth for cross stitch and embroidery. If you're an embroidery and cross-stitch enthusiast, you'll be happy to know I carry everything for your embroidery and cross-stitch needs. I have threads from DMC, Cosmo, Threadworx, Madiera and Cottage Garden Threads, just to name a few. Of course, for patchworkers, I have many books, patterns and other necessities for completing a quilt. If you need help with anything, don't hesitate to ask: I'm always happy to help out.

What we recommend: A great new kit is this simple quilt that measures 35½ x 44½in (90 x 114cm) and is an adaption of *Life is a Patchwork of Friends* quilt card from Wildcraft Farm. This kit includes all you need – quilt card, stitchery fabric, charm pack, pearl cotton and binding fabric – all for just \$57 plus p&h.



Address: 37 Holmes Road, Moonee Ponds, Vic 3039

Phone: (03) 9375 3575

Email: tranquilitycrafts@bigpond.com.au

Facebook: www.facebook.com/TranquilityCraftsnSupplies

13. *Moonee Ponds* MOONEE PONDS SEWING BOUTIQUE



Where's Moonee Ponds: About 15 minutes north of Melbourne's CBD. Public transport is very convenient, with the No 59 tram from the city and buses stopping at the Moonee Ponds Junction, which is only a few steps from our front door – and the train station is a short walk down Puckle Street. Street parking is also available.

Where in Moonee Ponds: 44 Pascoe Vale Road. We have settled nicely into our new location, right behind the Clock Tower, Moonee Ponds Civic Centre and near the Junction where Pascoe Vale Road meets Mt Alexander Road. The beautiful Queen's Park is just a short distance away, and the Moonee Valley racecourse is only two streets behind us.

Who plays host: Evelyn with the help of Linda, Denise, Janneke and Andrea.

Worth visiting because: If you're after a new sewing machine, you've come to the right place, with the best brands of sewing machines in stock – Brother, Bernina, Janome, Pfaff, Husqvarna, Babylock, Elna and Handi Quilter Sweet 16. We also have Horn cabinets, the Brother Scan N Cut and the the new Janome Artistic Edge Digital Cutter. Of course, we have an extensive range of machine accessories, along with haberdashery, threads, machine-embroidery designs and stabilisers. We also have batting, patchwork fabrics and everything you need for your quilting creations. If you're in need of some help, we are more than happy to assist with all your sewing needs, including sewing classes, machine service and repairs.

What we recommend: Come in and experience our great old-fashioned service. We will guide you through your machine purchase, give you a free lesson on how to use it and help you in any way we can in choosing the right accessories, fabrics, scissors, threads and more.

Address: 44 Pascoe Vale Road, Moonee Ponds, Vic 3039

Phone: (03) 9370 8695

Email: mpsewing@bigpond.net.au

Website: www.mooneepondssewing.com

14. Fairfield GJS DISCOUNT FABRICS



Where's Fairfield: A suburb in the north-east of Melbourne, just a short drive from the CBD.

Where in Fairfield: 31 Steane Street. We're on the corner of Sparks Avenue and Steane Street. We are extremely excited to have moved into our new premises just off Darebin Road in the hip suburb of Fairfield after 21 years in Brunswick. We're not far from the warehouse outlet of Diana Ferrari and Warwick, and there is plenty of parking and space to move.

Who plays host: Georgia, Sue and Carolyn head up an amazing team who are friendly, knowledgeable and experienced in many aspects of the sewing industry.

Worth visiting because: We are well established as Melbourne's largest independent retail fabric store, specialising in patchwork

and craft fabrics, as well as glitter and dance fabrics, as we are a leading supplier to the dance and theatrical arts industry. However, our patchwork and craft fabrics are sure to blow you away with some of the best designers and manufacturers around. We have ranges from Cotton & Steel, Tula Pink, Amy Butler, Kaffe Fassett, Art Gallery, Moda, Kokka, Michael Miller, Riley Blake and StudioTGreen, just to name a few. We also have an extensive range of haberdashery. Our new location fortunately has an upstairs sewing room, which is available for sewing groups and workshops. Feel free to enquire about our existing groups so you can join in the fun, or maybe you could start your own group! We also welcome large groups and bus tours to the store. We're open Mon-Fri 9am-5pm, Sat 9am-4pm, closed on public holidays.

What we recommend: We have patterns from the very talented girls at Ric Rac and Nicole Mallalieu Designs, so inspiration is never far! We also have a customer loyalty program, so make sure you show us your card when you are in store and for every \$200 you spend you will receive \$20 off your next purchase – always a nice surprise.

Address: 31 Steane Street, Fairfield, Vic 3078

Phone: (03)9380 2989, 0403 184 853

Email: info@gjsdiscountfabrics.com.au

Website: www.gjsdiscountfabrics.com.au

15. Camberwell OPENDRAWER

Where's Camberwell: An eastern suburb of Melbourne; the locals call this area Hartwell.

Where in Camberwell: 1158 Toorak Road, just east of the intersection of Toorak and Camberwell Roads. We're on the No 75 tram route and a short walk from Burwood Station. We have good coffee nearby, as well as the delicious Leo's Supermarket around the corner. This is a great place to park, if you're driving.

Who plays host: Robyn Steel-Stickland with help from the lovely Kate, Millie, Taff and Tess.

Worth visiting because: We are edgy, arty, elegant and quirky. A typical first-time visit goes like this: your eyes bulge, your mouth drops open and you forget to breathe – the colour and visual splendor is just that overwhelming! We like to think of ourselves as a 'live Etsy' – a place where art meets craft and beyond. We offer a unique art and textiles environment with specialised and unusual products. For one, we have a vintage textiles emporium, and we also sell the handmade work of Australian artists and artisans and support sustainable art and craft practices. At Opendrawer, we celebrate creativity; we are a place of sharing and community and we provide practical and creative workshops. We are definitely a place with a vibe!

What we recommend: Our workshops and courses are of a high standard, with experienced and well-regarded tutors. Our



workshops and courses are diverse, including Art Play, Play Days, felt making, sewing, bookmaking, crochet, knitting and more. There is also social sewing, Crafty T'Arts, Days for Girls volunteer days, and we also host birthday parties.

Address: 1158 Toorak Road, Camberwell, Vic 3124

Phone: (03) 9889 7227

Email: info@opendrawer.com.au

Website: www.opendrawer.com.au

16. Oakleigh CRAFTEE COTTAGE

Where's Oakleigh: Oakleigh is a foodie's delight. Situated in the south-eastern suburbs of Melbourne, Oakleigh Village is full of interesting shops, including wonderful cafes and delis. Many people come to Oakleigh for a gourmet lunch or coffee and cake in the Eaton St Mall.

Where in Oakleigh: Shop 5, 52-54 Atherton Road. Just off Warrigal Road and an easy six-minute drive from Chadstone.

Who plays host: Owned and operated by mother-and-daughter team Sylvia and Tracey. Our wonderful staff includes Marlies, Marg and Di. We all have our areas of expertise and are always happy to help.

Worth visiting because: We are a treasure trove of yarn and embroidery and have an extensive range of knitting yarns from Australia, New Zealand and Europe. Our shop is friendly, welcoming and usually very full. You might even see a class in action when you drop in. We are also well worth a visit to see our extensive range of Shepherds Bush cross-stitch stockings on display.

What we recommend: For those who love fine crochet, we absolutely love the Butterfly crochet thread from Greece. It comes in a variety of sizes and colours and is an exceptional quality at a good price. We also love our gorgeous yarns. Our current favourites are Australian Superfine Merino – nothing like the



quality of this yarn, with a stunning colour range. Rowan Kidsilk Haze is another beautiful yarn that we are in love with: it's a laceweight mohair/silk blend, just perfect for all those fine lacy projects. There are also lots of new yarns that have just arrived in store for winter 2015 – Panda Minky plush, Patons EXFM, Naturally Baby Natural, Debbie Bliss Fine Donegal and lots more. Also, our favourites in embroidery are the much-loved Shepherds Bush designs.

Address: Shop 5, 52-54 Atherton Road, Oakleigh, Vic 3166

Phone: (03) 9568 3606 **Email:** info@crafteecottage.com.au

Website: www.crafteecottage.com.au

17. Blackburn SEWN AND QUILTED



Where's Blackburn: In the eastern suburbs of Melbourne, approximately 20km from the CBD.

Where in Blackburn: 92 Whitehorse Road (Maroondah Highway).

Located on the city-bound side of the highway, just five doors down from the end of the shopping precinct, our shop is located at the rear of our house. We are a short walk from Blackburn station, and just a few minutes' drive from the Eastern Freeway.

Who plays host: Owned by Carol Nicholls and supported by our wonderful staff.

Worth visiting because: You'll be very impressed by our range of around 2,000 bolts of beautiful fabric, along with a large selection of books and patterns. Classes run on most days, too, so there is something for everyone, and we also offer a comprehensive beginner course, which runs frequently. We have a large hand-piecing following, but equally as large is our students' love for machine piecing and foundation paper piecing. To help finish your quilts, we offer an onsite long-arm quilting, basting and binding service.

What we recommend: We have some great new patterns in stock from Quiltworx, and we now also stock the stunning BeColourful range of patterns. Plus new to our store is a gorgeous range of Kaffe Fassett fabrics that you'll just love.

Address: 92 Whitehorse Road, Blackburn, Vic 3130

Phone: (03) 9877 1664

Email: carol@sewnandquilted.com.au

Website: www.sewnandquilted.com.au

18. Boronia LILLY PATCHES



Where's Boronia: At the foot of the leafy Dandenongs; we're close to the Puffing Billy (train) and the challenge of the 1,000-step climb.

Where in Boronia: Shop 10, Boronia Village, 159 Boronia Road. In the main shopping district of Boronia, Boronia Road is the

main road through town. Entry to the shopping village is through the carpark, where there is plenty of car parking available for visitors to our store.

Who plays host: June Wilson

Worth visiting because: I have so many wonderful fabrics to choose from, including the Jinny Beyer Palette, Shadow Play, a selection of Australian Aboriginal fabrics, batiks, Bali pops, reproductions and so many more. Have a look through the selection of patterns, including many from local designers, and books to inspire your next project. Or maybe pick up a kit and get started as soon as you get home. I also have Guttermann threads, Madeira Mouline embroidery floss and Juki sewing machines. The store is certified in Judy Neimeyer Quilting, and I stock Judy Neimeyer foundation paper patterns. Visit the website for a full list on our classes and join in the fun.

What we recommend: Check out the Triumph LED Light Pad. Thinner than any lightbox on the market, it will totally revolutionise your tracing.

Address: Shop 10, Boronia Village, 159 Boronia Road, Boronia, Vic 3155

Phone: (03) 9761 2088

Email: info@lilypatches.com.au

Website: www.lilypatches.com.au