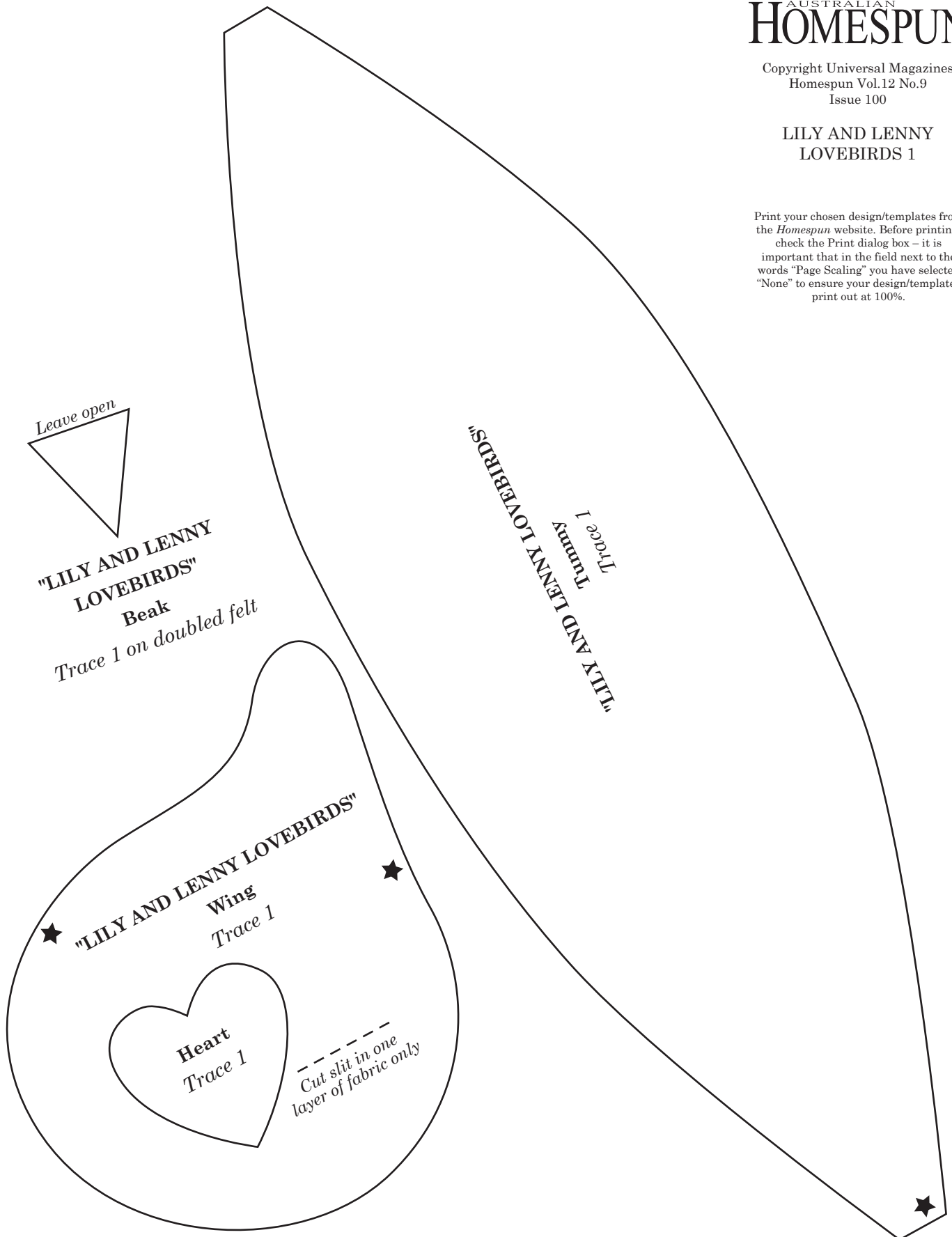


**LILY AND LENNY  
LOVEBIRDS 1**

Print your chosen design/templates from the *Homespun* website. Before printing, check the Print dialog box – it is important that in the field next to the words "Page Scaling" you have selected "None" to ensure your design/templates print out at 100%.

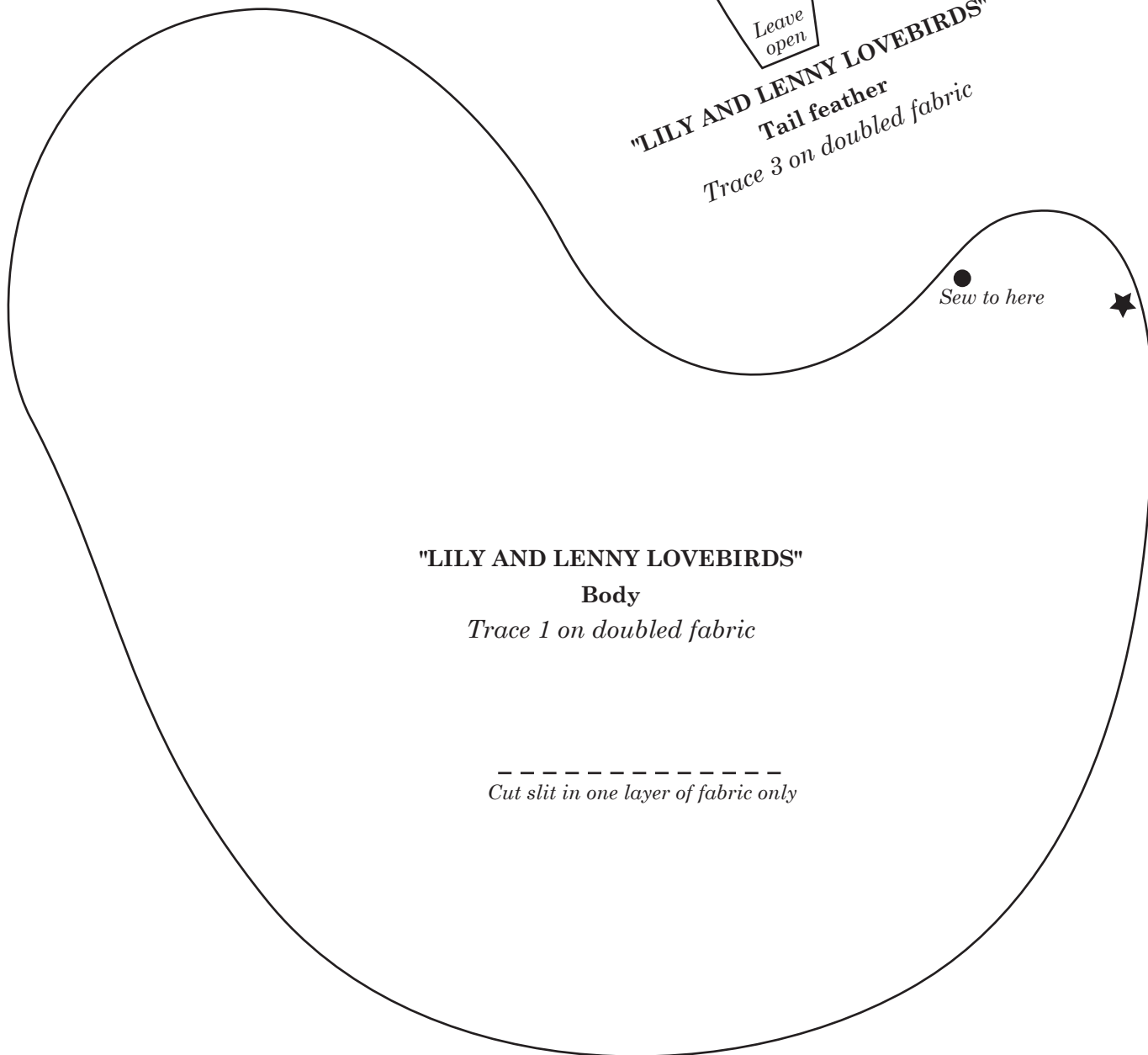


Print your chosen design/templates from the *Homespun* website. Before printing, check the Print dialog box – it is important that in the field next to the words "Page Scaling" you have selected "None" to ensure your design/templates print out at 100%.

LILY AND LENNY  
LOVEBIRDS 2



**"LILY AND LENNY LOVEBIRDS"**  
**Tail feather**  
*Trace 3 on doubled fabric*



●  
*Sew to here*



**"LILY AND LENNY LOVEBIRDS"**

**Body**

*Trace 1 on doubled fabric*

-----  
*Cut slit in one layer of fabric only*