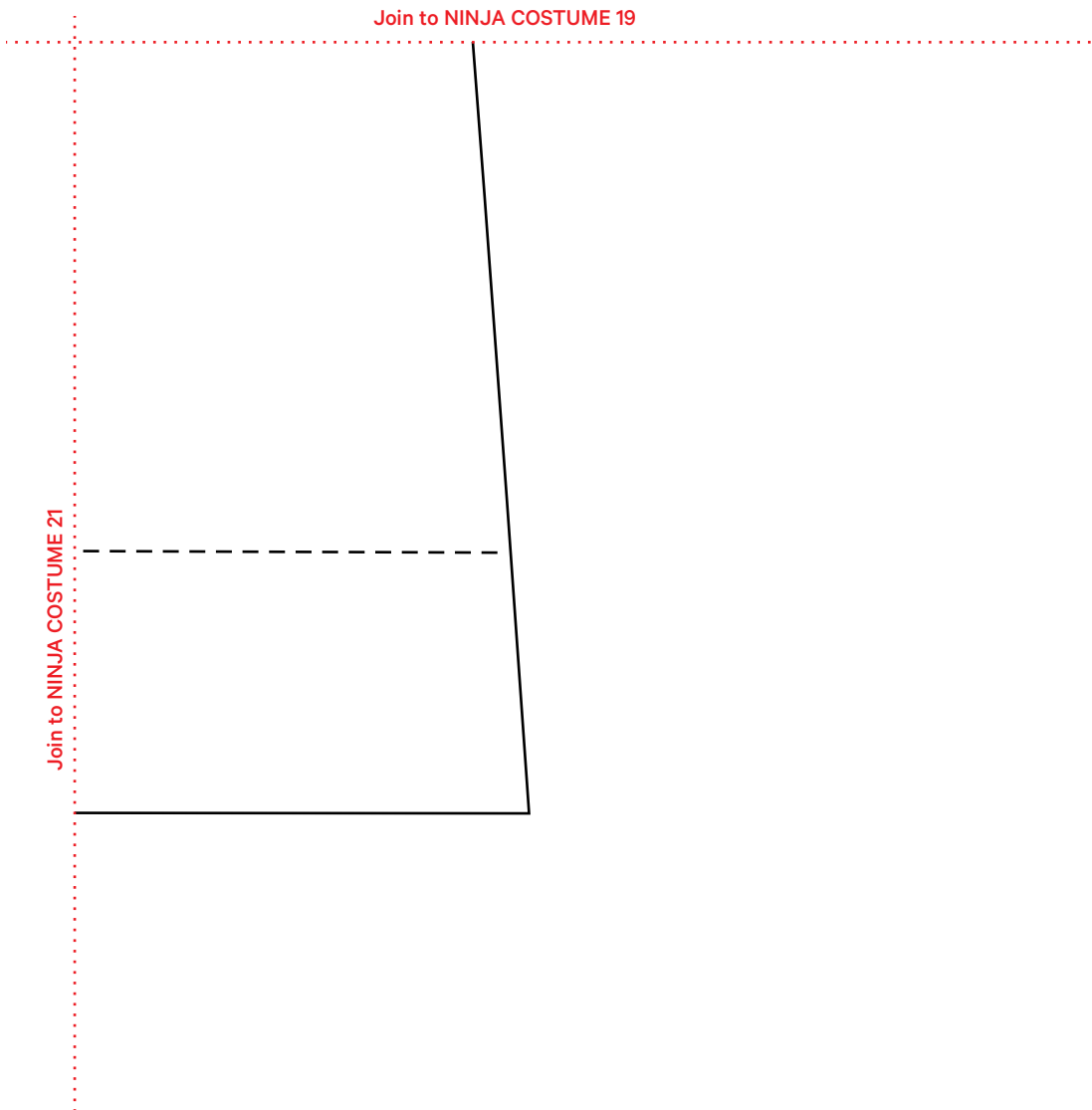
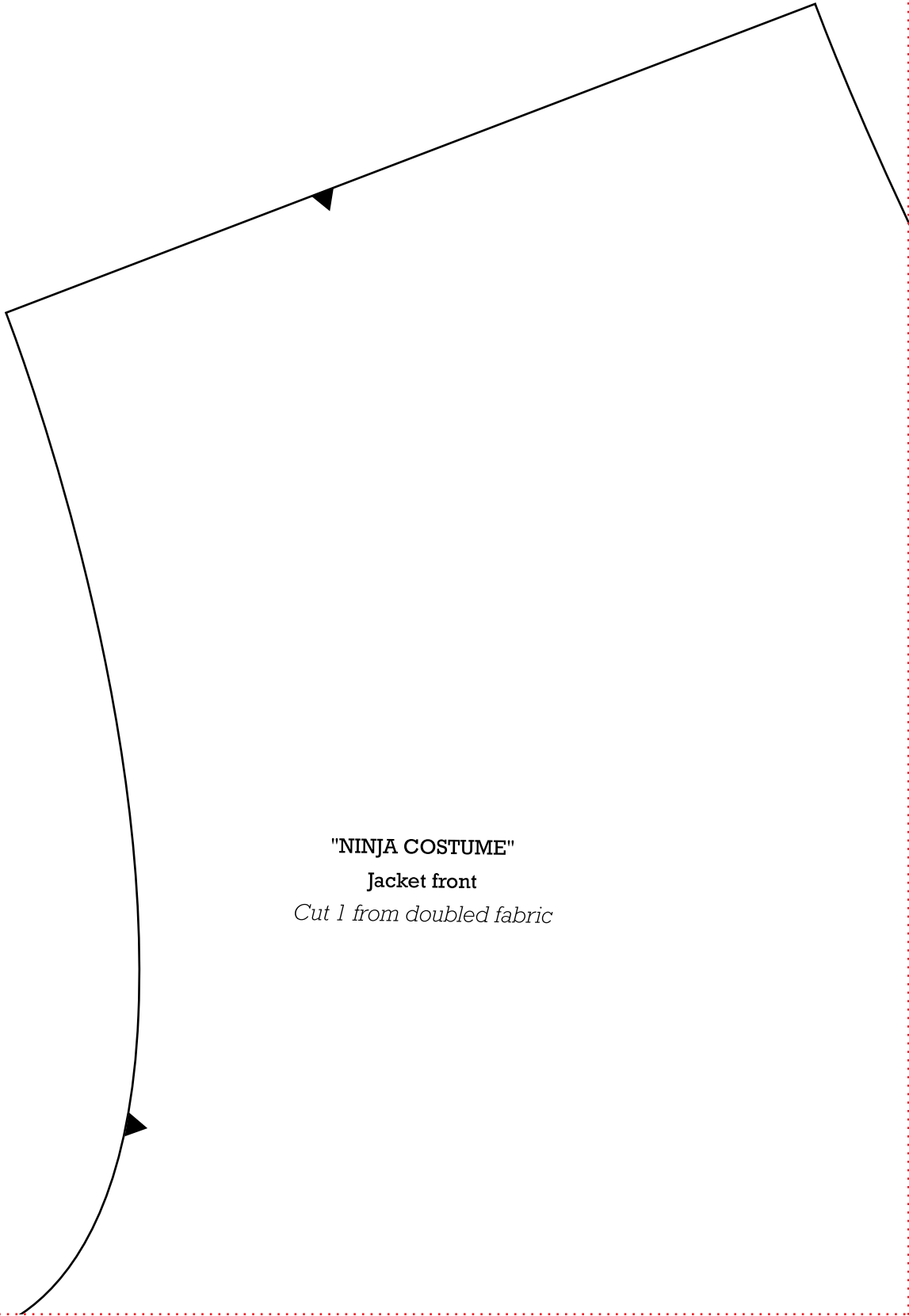


Print your chosen design/templates from the *Homespun* website. Before printing, check the Print dialog box – it is important that in the field next to the words “Page Scaling” you have selected “None” to ensure your design/templates print out at 100%.



Print your chosen design/templates from the *Homespun* website. Before printing, check the Print dialog box – it is important that in the field next to the words “Page Scaling” you have selected “None” to ensure your design/templates print out at 100%.



"NINJA COSTUME"  
Jacket front  
*Cut 1 from doubled fabric*

Join to NINJA COSTUME 24

Print your chosen design/templates from the *Homespun* website. Before printing, check the Print dialog box – it is important that in the field next to the words “Page Scaling” you have selected “None” to ensure your design/templates print out at 100%.

Join to NINJA COSTUME 23

Join to NINJA COSTUME 25

Join to NINJA COSTUME 29

Print your chosen design/templates from the *Homespun* website. Before printing, check the Print dialog box – it is important that in the field next to the words “Page Scaling” you have selected “None” to ensure your design/templates print out at 100%.

Join to NINJA COSTUME 24

Join to NINJA COSTUME 26

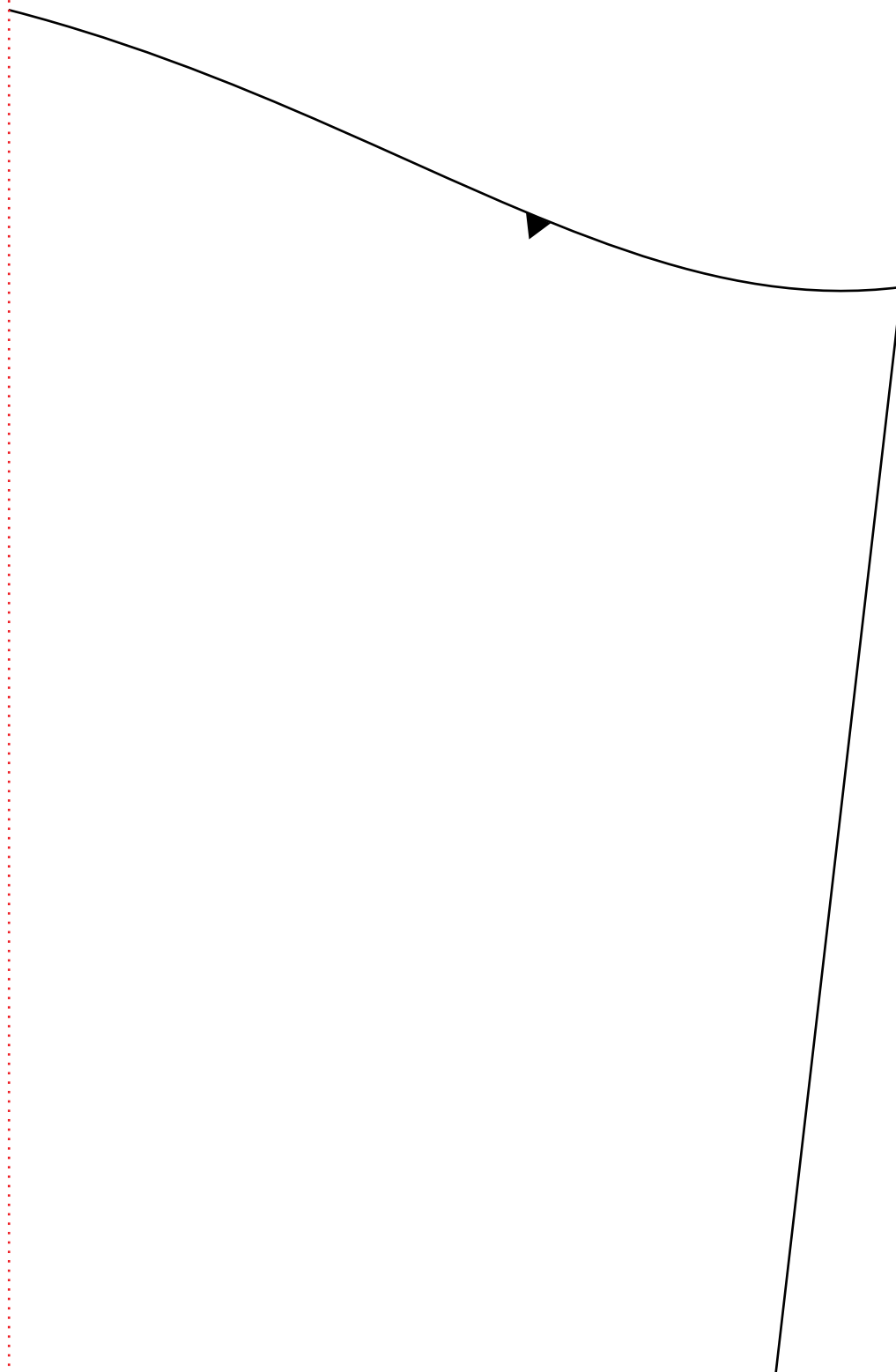
"NINJA  
COSTUME"  
Sleeve  
*Cut 1 from  
doubled fabric*



Join to NINJA COSTUME 28

Print your chosen design/templates from the *Homespun* website. Before printing, check the Print dialog box – it is important that in the field next to the words “Page Scaling” you have selected “None” to ensure your design/templates print out at 100%.

Join to NINJA COSTUME 25



Join to NINJA COSTUME 27

Print your chosen design/templates from the *Homespun* website. Before printing, check the Print dialog box – it is important that in the field next to the words “Page Scaling” you have selected “None” to ensure your design/templates print out at 100%.

Join to NINJA COSTUME 26

Join to NINJA COSTUME 28

Print your chosen design/templates from the *Homespun* website. Before printing, check the Print dialog box – it is important that in the field next to the words “Page Scaling” you have selected “None” to ensure your design/templates print out at 100%.

Join to NINJA COSTUME 25



Fold line

Join to NINJA COSTUME 29

Join to NINJA COSTUME 27

Print your chosen design/templates from the *Homespun* website. Before printing, check the Print dialog box – it is important that in the field next to the words “Page Scaling” you have selected “None” to ensure your design/templates print out at 100%.

Join to NINJA COSTUME 24

Waist

Join to NINJA COSTUME 30

Join to NINJA COSTUME 28



Print your chosen design/templates from the *Homespun* website. Before printing, check the Print dialog box – it is important that in the field next to the words “Page Scaling” you have selected “None” to ensure your design/templates print out at 100%.

Join to NINJA COSTUME 23

■ *Right side tie*

■ *Left side tie*



Join to NINJA COSTUME 29

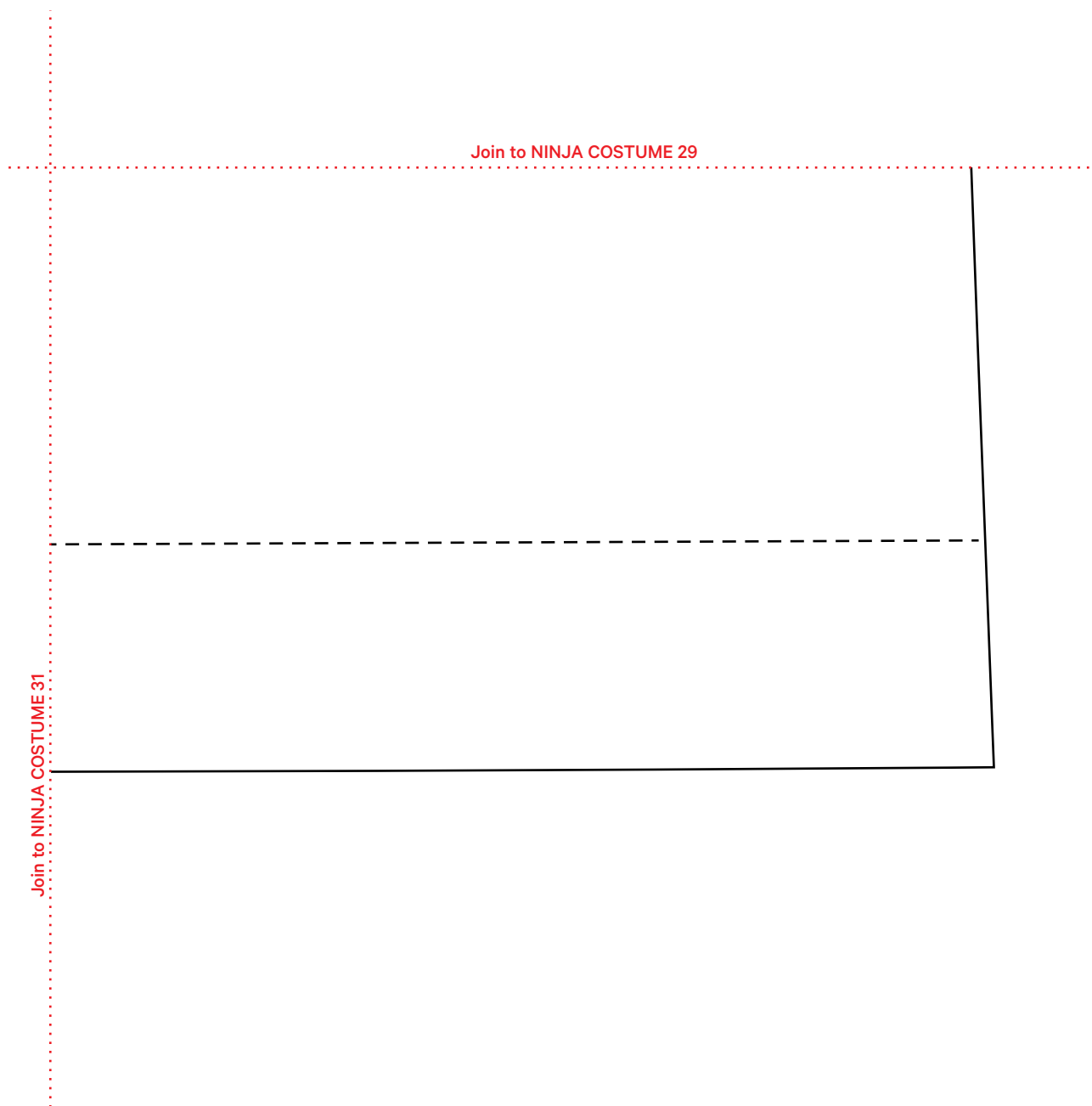
Print your chosen design/templates from the *Homespun* website. Before printing, check the Print dialog box – it is important that in the field next to the words “Page Scaling” you have selected “None” to ensure your design/templates print out at 100%.

Join to NINJA COSTUME 30

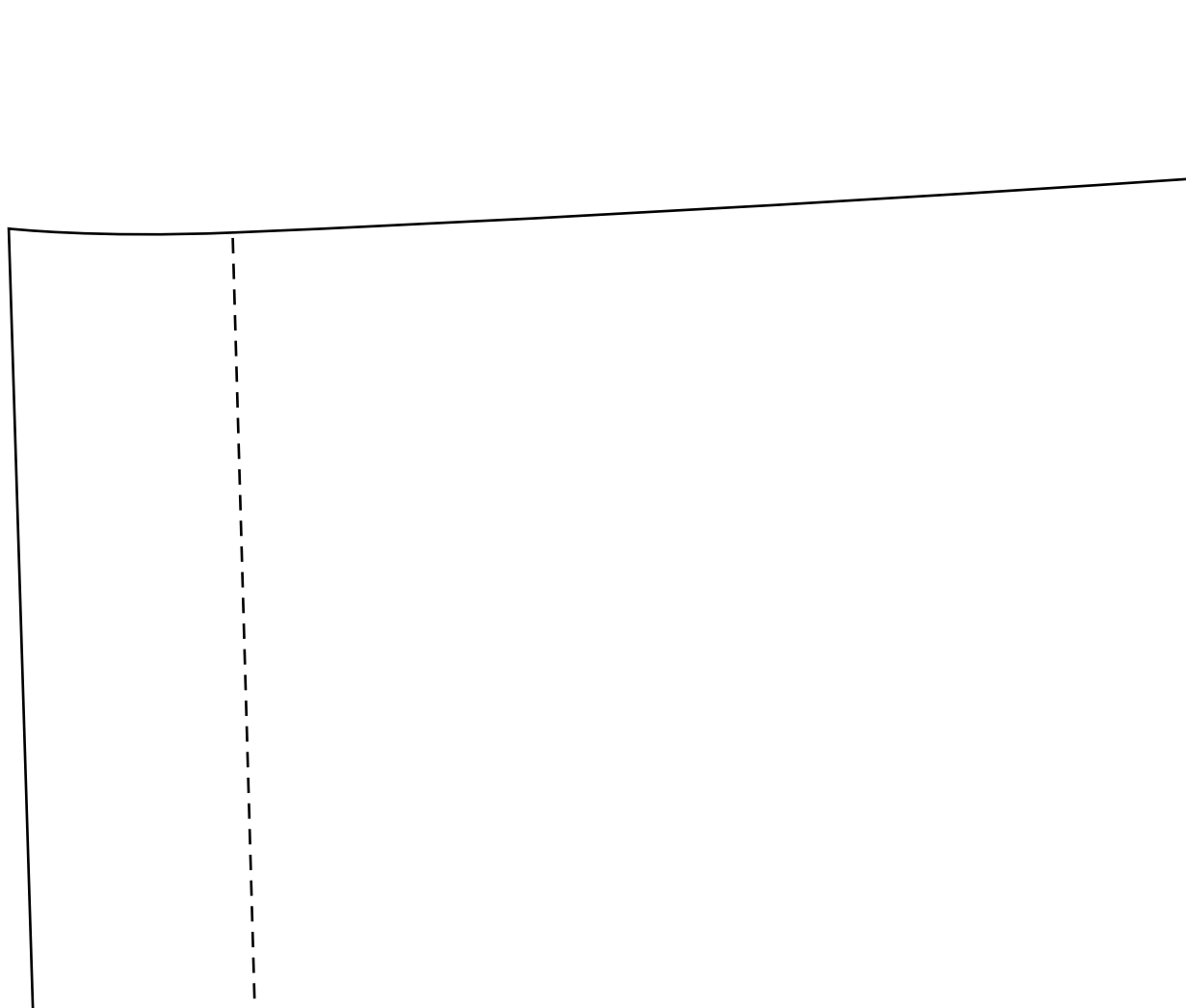
*Fold line*

Join to NINJA COSTUME 32

Print your chosen design/templates from the *Homespun* website. Before printing, check the Print dialog box – it is important that in the field next to the words “Page Scaling” you have selected “None” to ensure your design/templates print out at 100%.



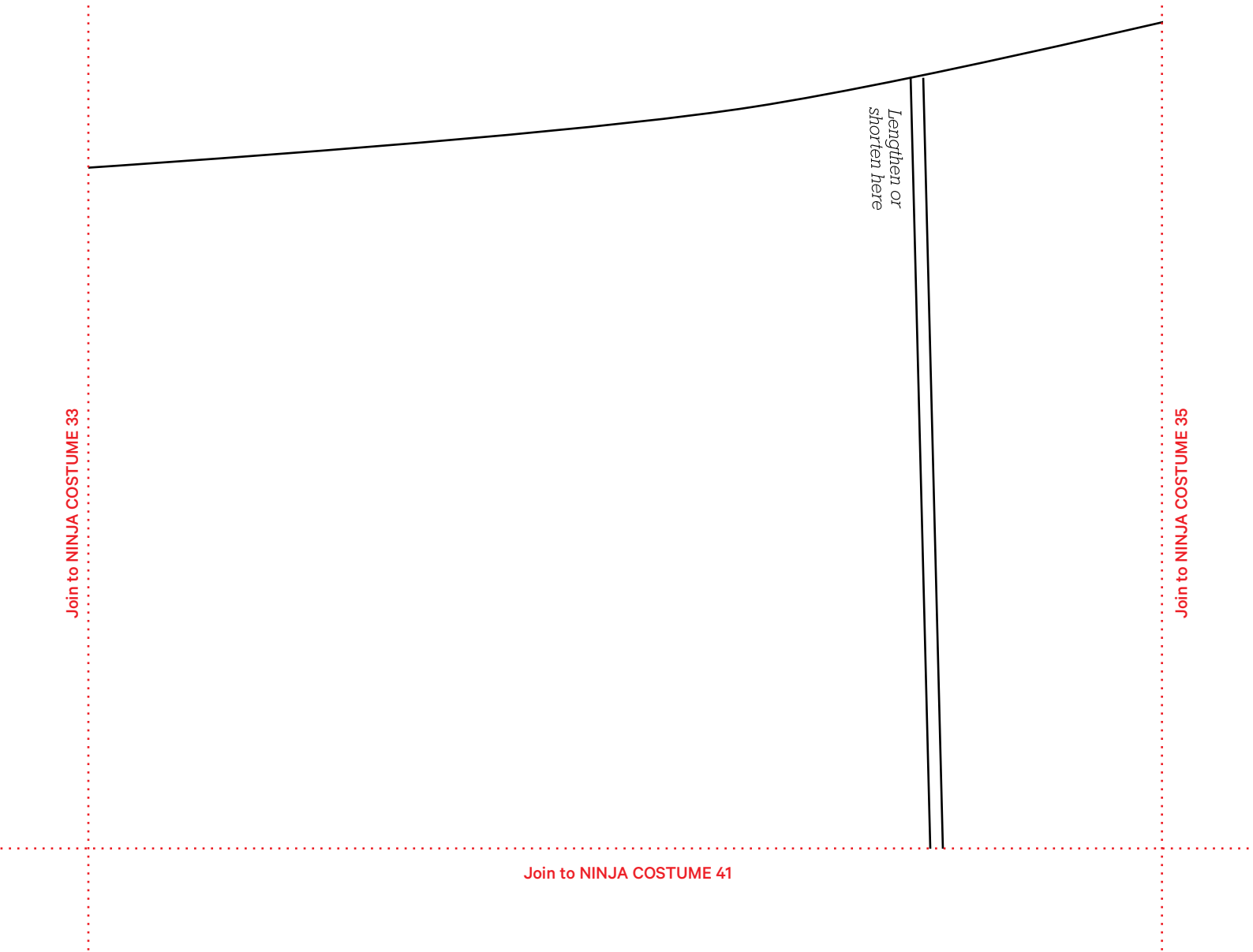
Print your chosen design/templates from the *Homespun* website. Before printing, check the Print dialog box – it is important that in the field next to the words “Page Scaling” you have selected “None” to ensure your design/templates print out at 100%.



Join to NINJA COSTUME 42

Join to NINJA COSTUME 34

Print your chosen design/templates from the *Homespun* website. Before printing, check the Print dialog box – it is important that in the field next to the words “Page Scaling” you have selected “None” to ensure your design/templates print out at 100%.



Print your chosen design/templates from the *Homespun* website. Before printing, check the Print dialog box – it is important that in the field next to the words “Page Scaling” you have selected “None” to ensure your design/templates print out at 100%.



Copyright Universal Magazines  
Homespun Vol.15 No.1 Issue 128

**NINJA COSTUME**

**35**

Join to NINJA COSTUME 34

Join to NINJA COSTUME 36

Join to NINJA COSTUME 40

Print your chosen design/templates from the *Homespun* website. Before printing, check the Print dialog box – it is important that in the field next to the words “Page Scaling” you have selected “None” to ensure your design/templates print out at 100%.

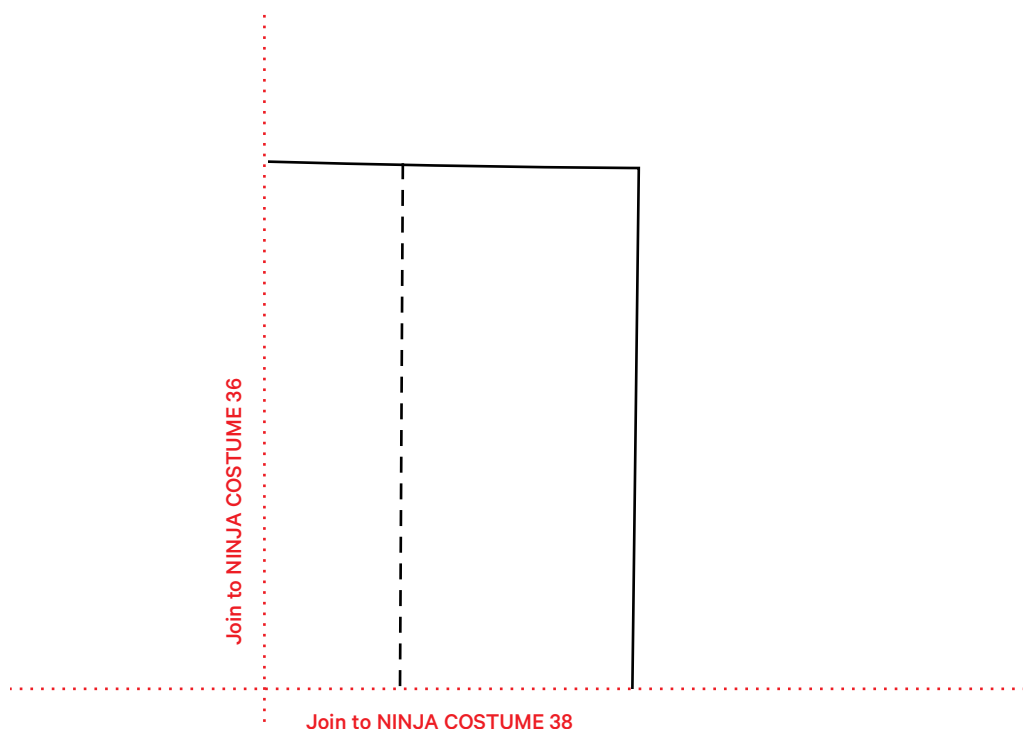
Join to NINJA COSTUME 35

Join to NINJA COSTUME 37

Centre back

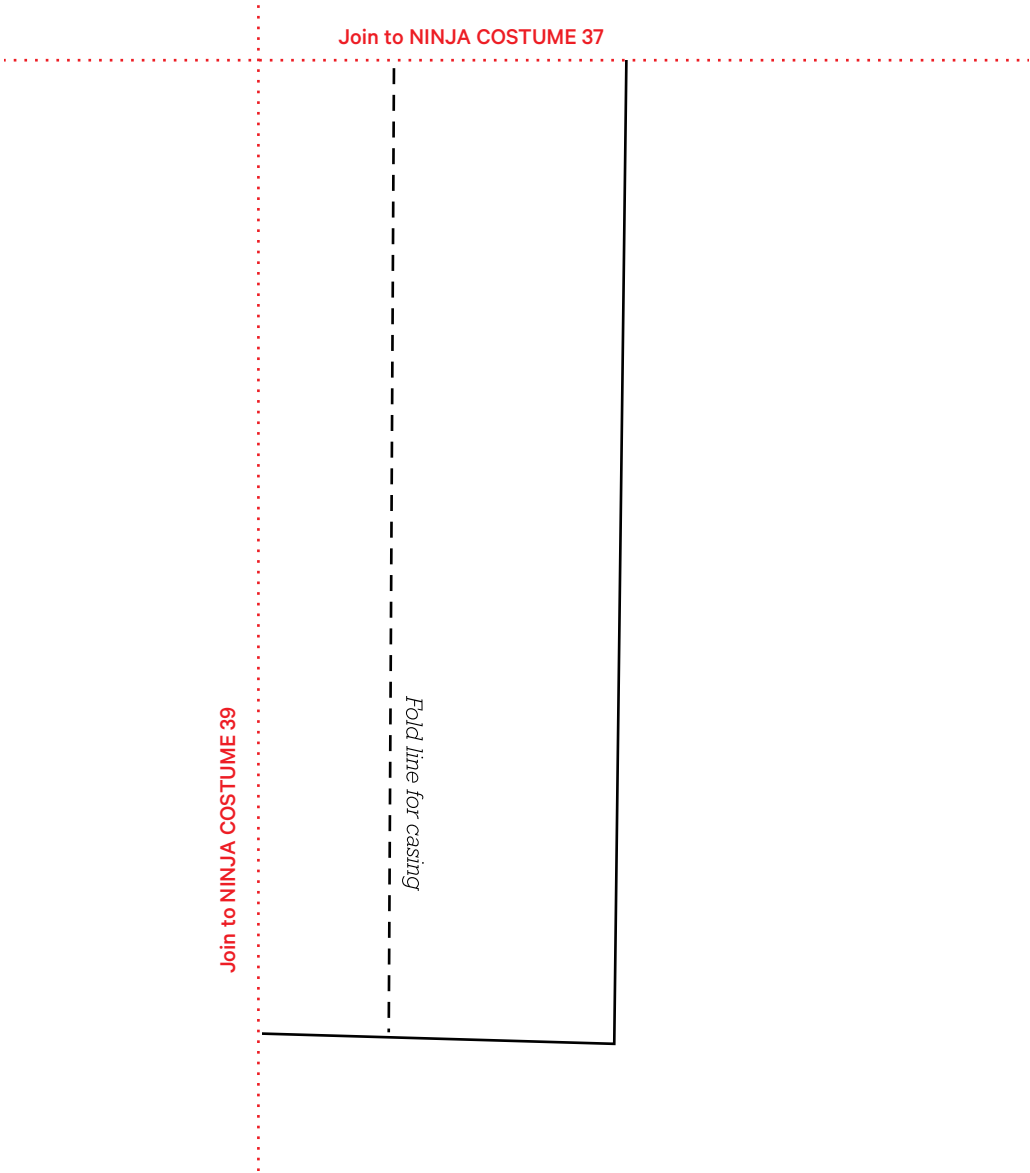
Join to NINJA COSTUME 39

Print your chosen design/templates from the *Homespun* website. Before printing, check the Print dialog box – it is important that in the field next to the words “Page Scaling” you have selected “None” to ensure your design/templates print out at 100%.





Print your chosen design/templates from the *Homespun* website. Before printing, check the Print dialog box – it is important that in the field next to the words “Page Scaling” you have selected “None” to ensure your design/templates print out at 100%.



Print your chosen design/templates from the *Homespun* website. Before printing, check the Print dialog box – it is important that in the field next to the words “Page Scaling” you have selected “None” to ensure your design/templates print out at 100%.

Join to NINJA COSTUME 36

Join to NINJA COSTUME 40

Join to NINJA COSTUME 38

Print your chosen design/templates from the *Homespun* website. Before printing, check the Print dialog box – it is important that in the field next to the words “Page Scaling” you have selected “None” to ensure your design/templates print out at 100%.

Join to NINJA COSTUME 35

Join to NINJA COSTUME 41

Join to NINJA COSTUME 39

Print your chosen design/templates from the *Homespun* website. Before printing, check the Print dialog box – it is important that in the field next to the words “Page Scaling” you have selected “None” to ensure your design/templates print out at 100%.

Join to NINJA COSTUME 34

"NINJA COSTUME"  
Pants back  
Cut 1 from doubled fabric

Join to NINJA COSTUME 42

Join to NINJA COSTUME 40

Print your chosen design/templates from the *Homespun* website. Before printing, check the Print dialog box – it is important that in the field next to the words “Page Scaling” you have selected “None” to ensure your design/templates print out at 100%.

Join to NINJA COSTUME 33

*Fold line for hem*

Join to NINJA COSTUME 41