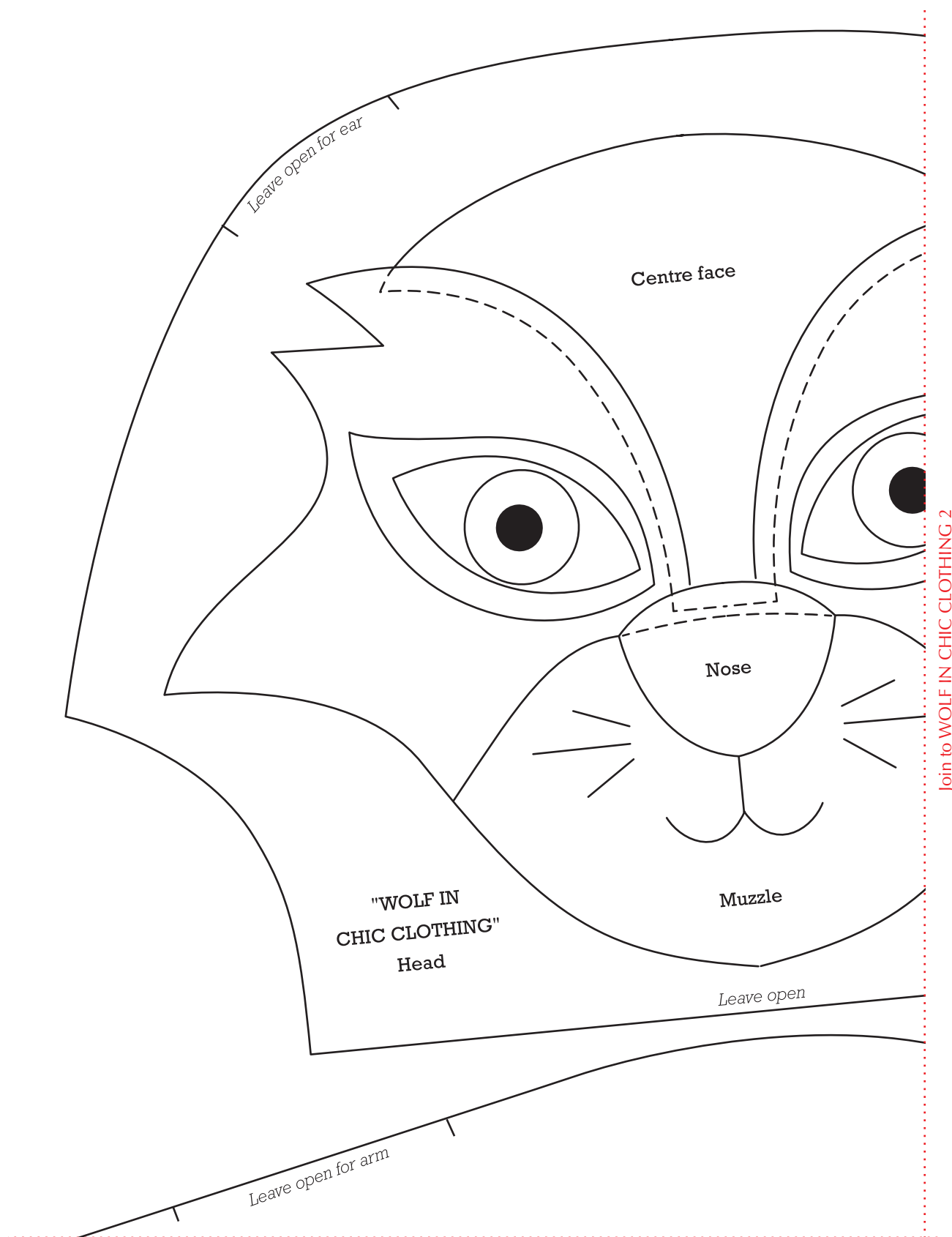
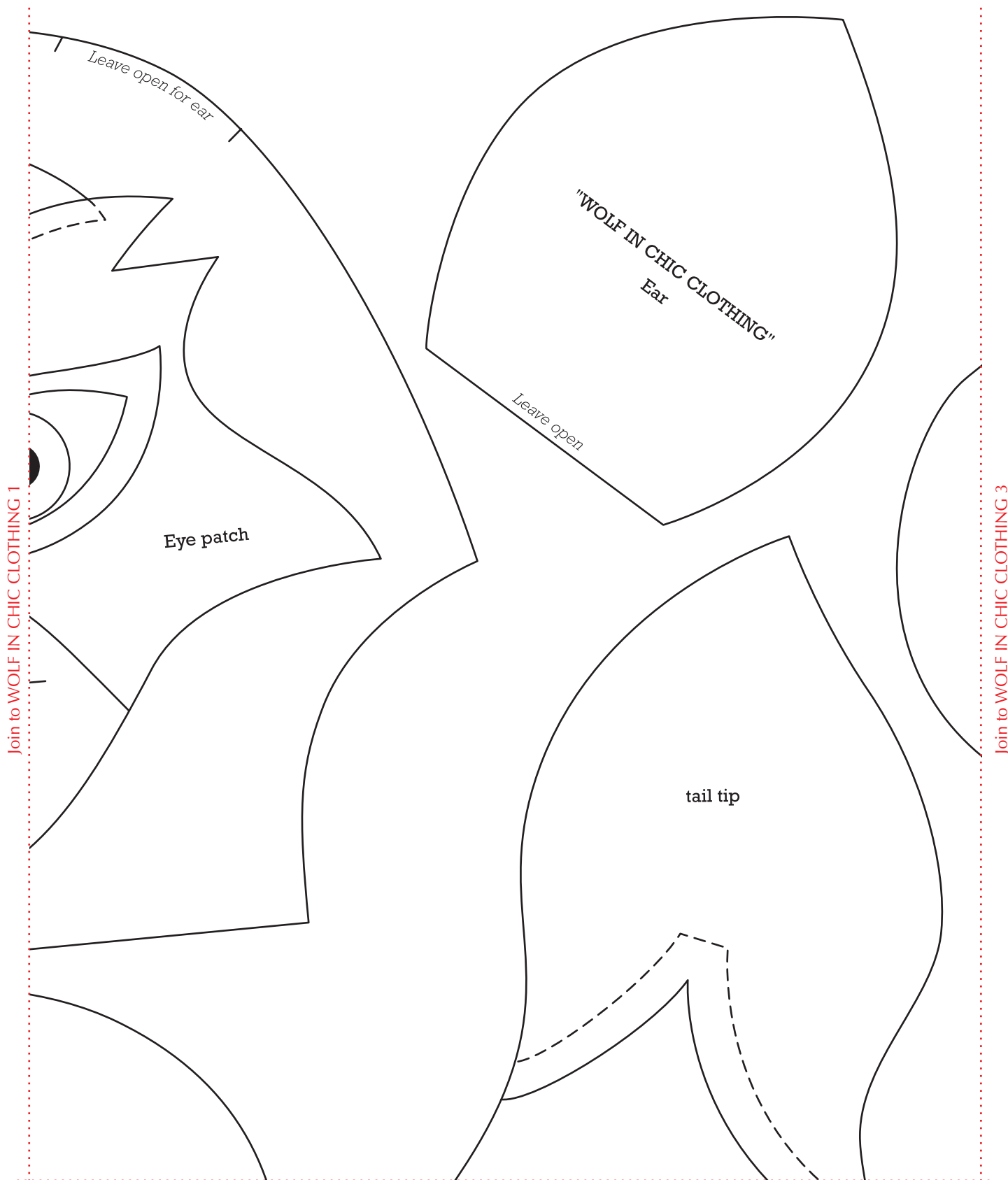


Print your chosen design/templates from the *Homespun* website. Before printing, check the Print dialog box – it is important that in the field next to the words “Page Scaling” you have selected “None” to ensure your design/templates print out at 100%.



Print your chosen design/templates from the *Homespun* website. Before printing, check the Print dialog box – it is important that in the field next to the words “Page Scaling” you have selected “None” to ensure your design/templates print out at 100%.



Print your chosen design/templates from the *Homespun* website. Before printing, check the Print dialog box – it is important that in the field next to the words “Page Scaling” you have selected “None” to ensure your design/templates print out at 100%.

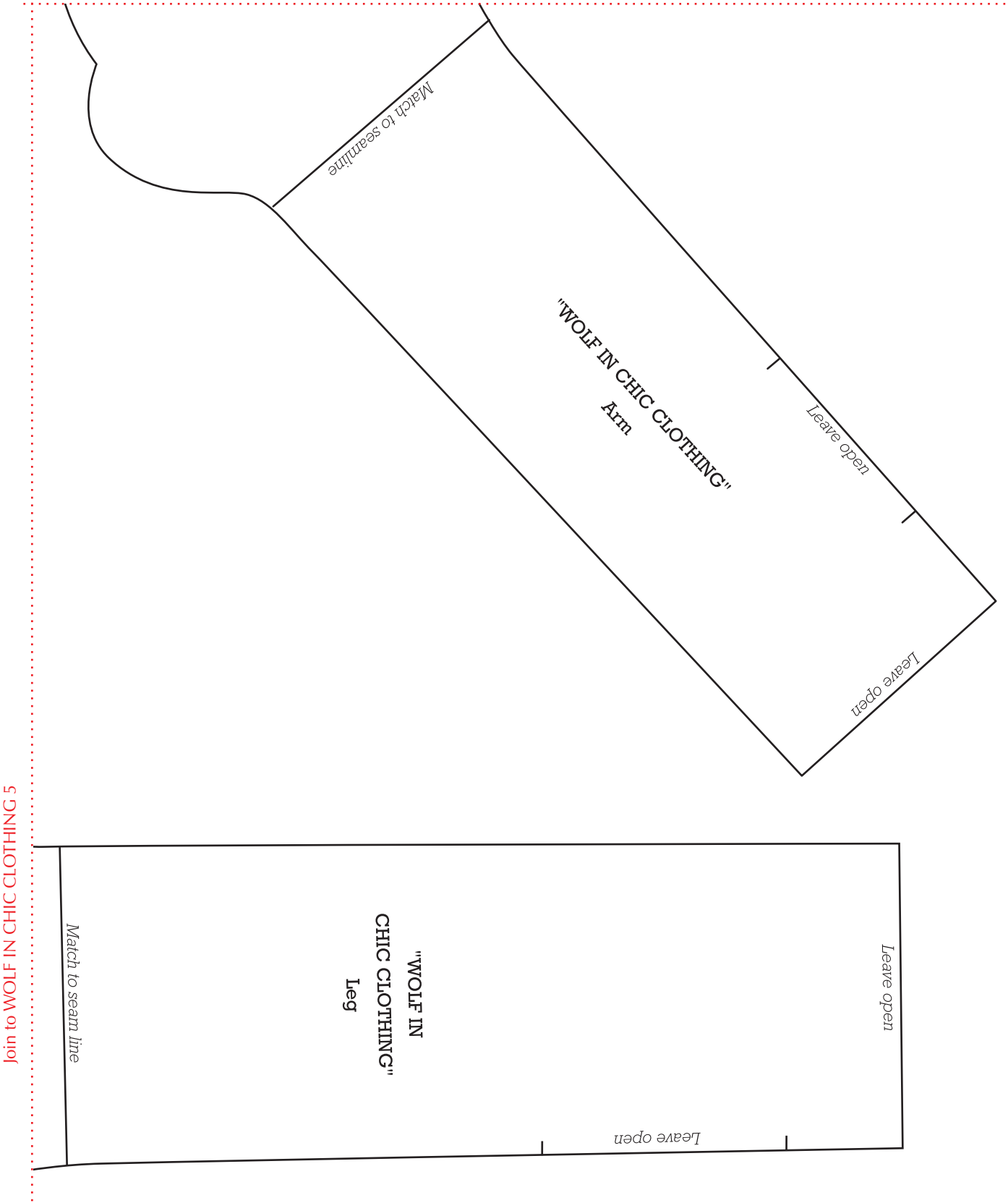
Join to WOLF IN CHIC CLOTHING 2

"WOLF IN CHIC CLOTHING"
Belly

Join to WOLF IN CHIC CLOTHING 4

Print your chosen design/templates from the *Homespun* website. Before printing, check the Print dialog box – it is important that in the field next to the words “Page Scaling” you have selected “None” to ensure your design/templates print out at 100%.

Join to WOLF IN CHIC CLOTHING 3



Print your chosen design/templates from the *Homespun* website. Before printing, check the Print dialog box – it is important that in the field next to the words “Page Scaling” you have selected “None” to ensure your design/templates print out at 100%.

Join to WOLF IN CHIC CLOTHING 2

"WOLF IN CHIC CLOTHING"
Lower tail

Leave open for leg

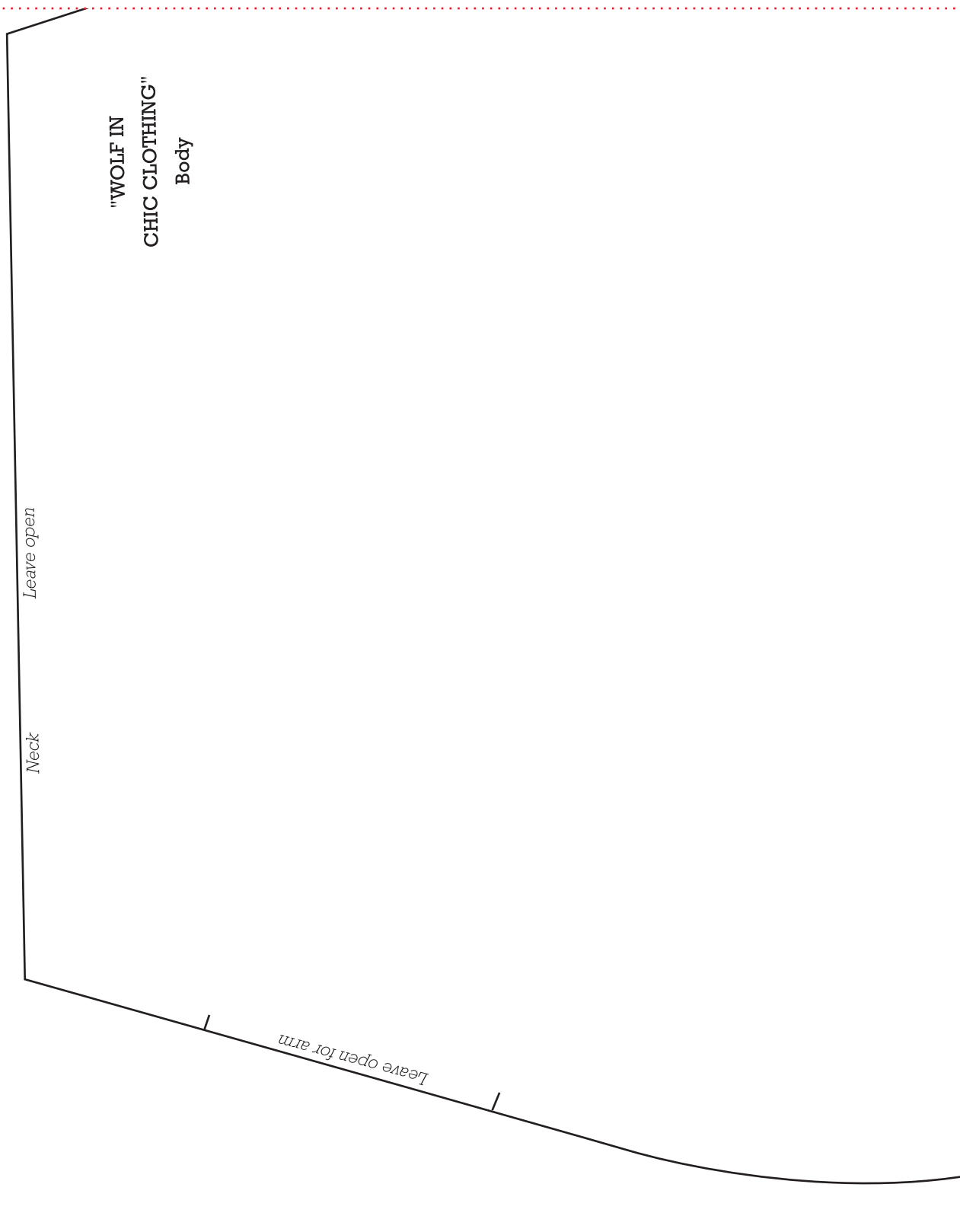
Leave open for leg

Join to WOLF IN CHIC CLOTHING 6

Join to WOLF IN CHIC CLOTHING 4

Print your chosen design/templates from the *Homespun* website. Before printing, check the Print dialog box – it is important that in the field next to the words “Page Scaling” you have selected “None” to ensure your design/templates print out at 100%.

Join to WOLF IN CHIC CLOTHING 1



Join to WOLF IN CHIC CLOTHING 5