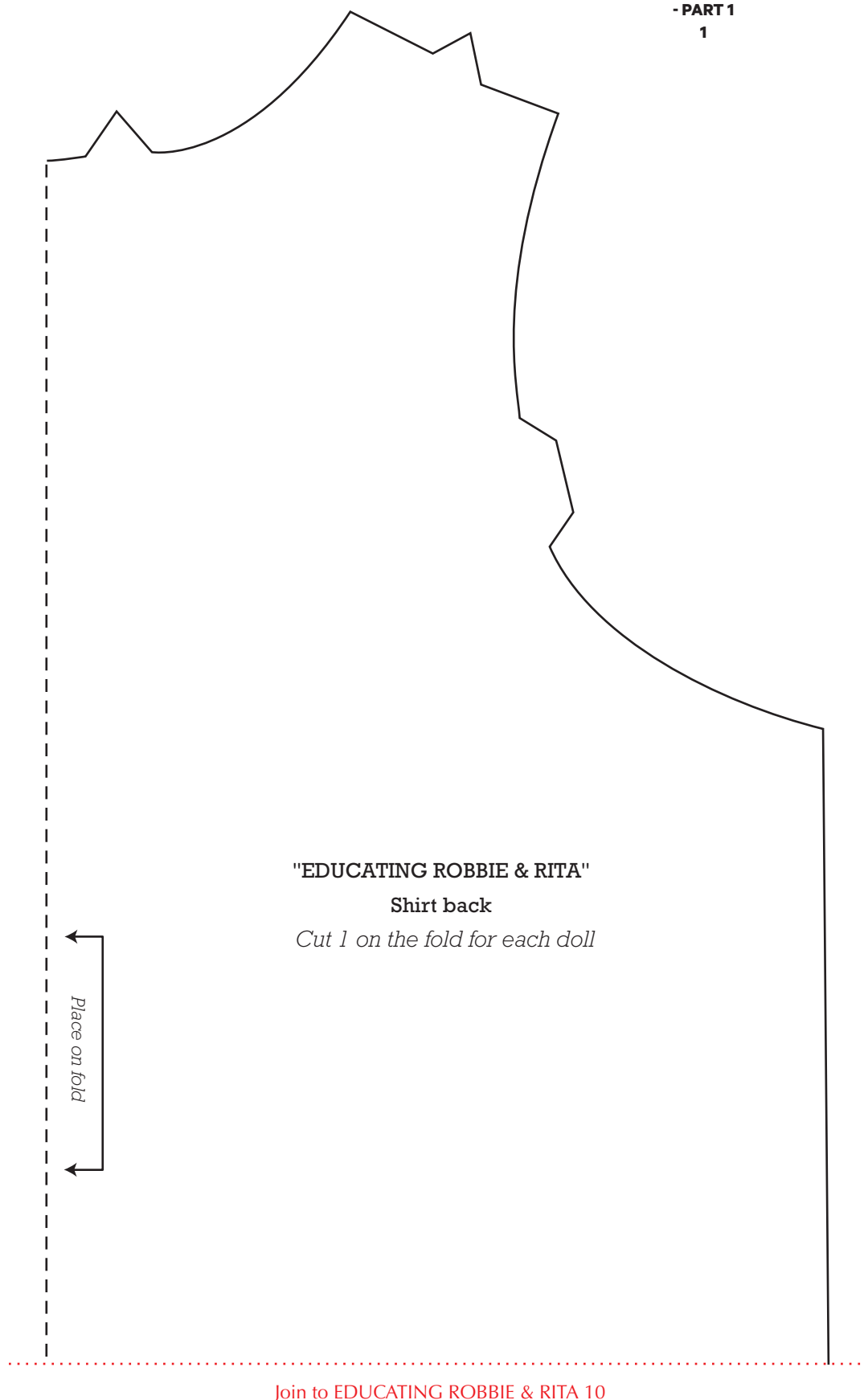
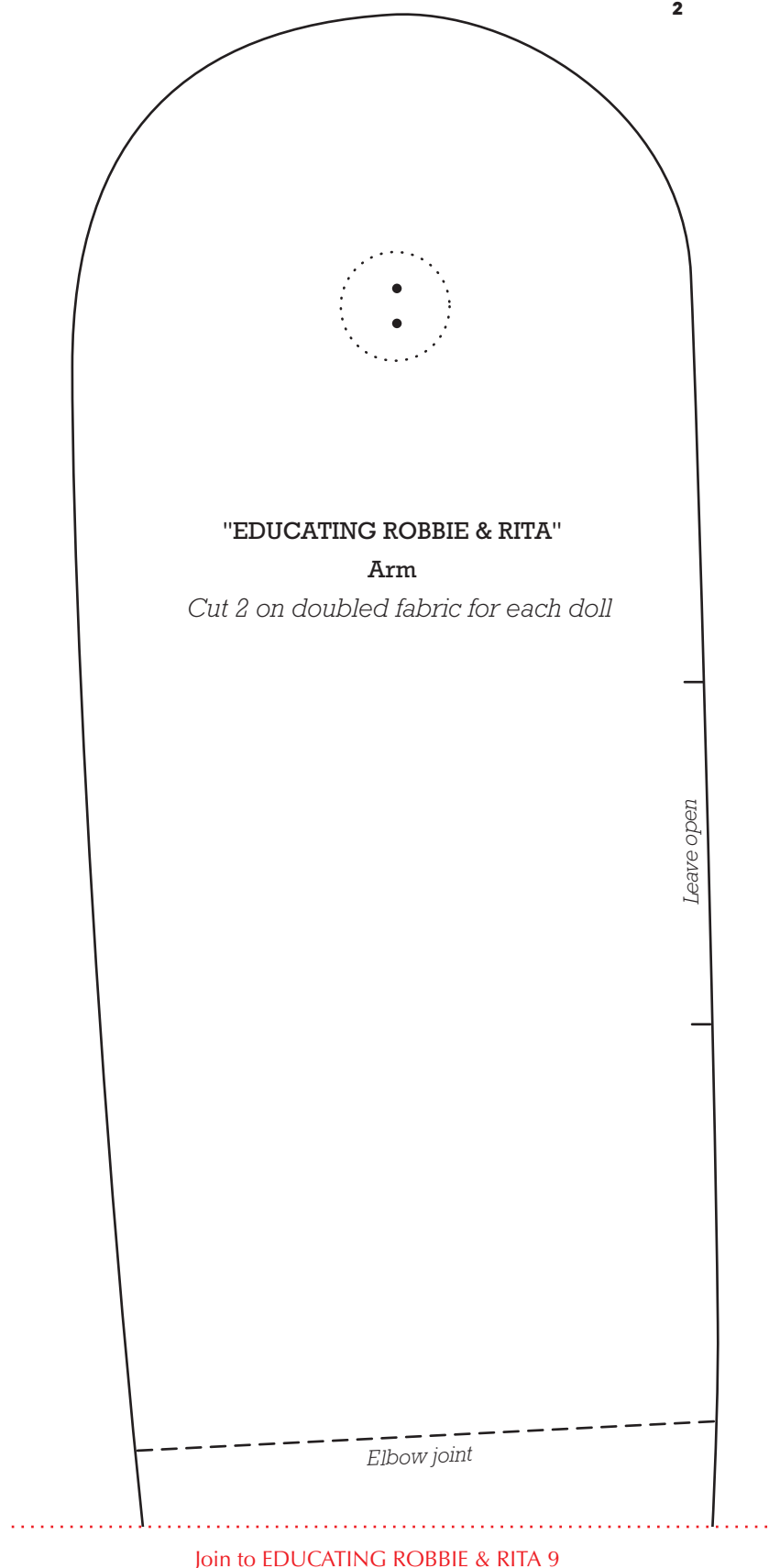


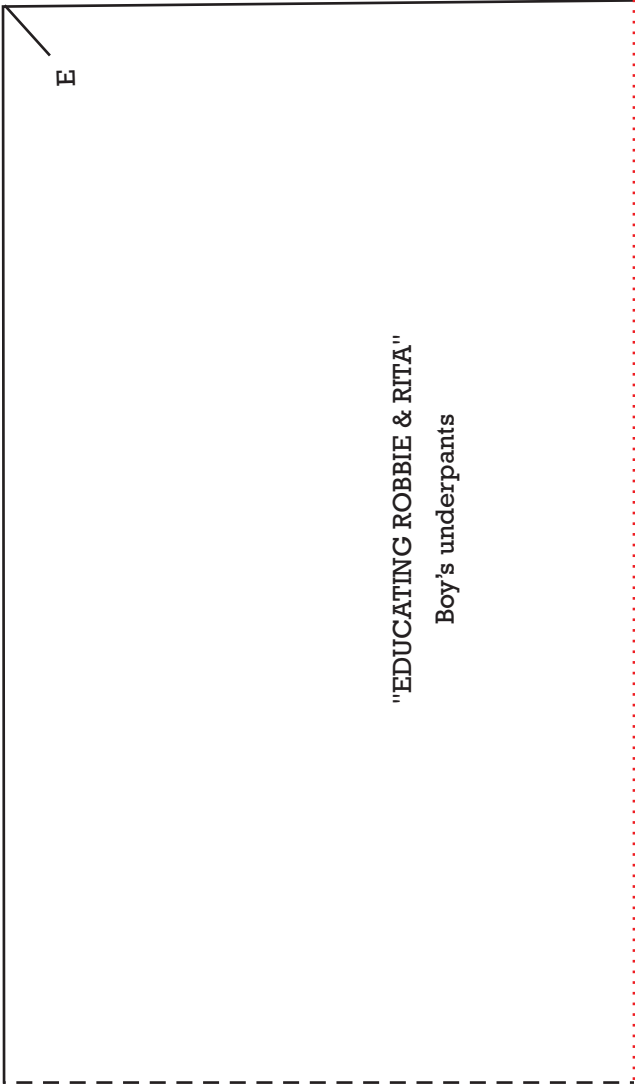
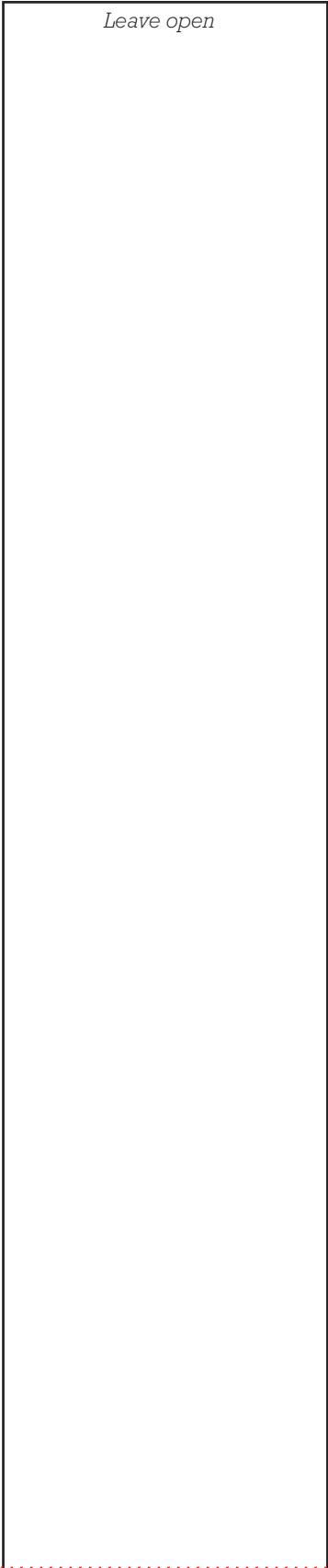
Print your chosen design/templates from the *Homespun* website. Before printing, check the Print dialog box – it is important that in the field next to the words “Page Scaling” you have selected “None” to ensure your design/templates print out at 100%.



Print your chosen design/templates from the *Homespun* website. Before printing, check the Print dialog box – it is important that in the field next to the words “Page Scaling” you have selected “None” to ensure your design/templates print out at 100%.



Print your chosen design/templates from the *Homespun* website. Before printing, check the Print dialog box – it is important that in the field next to the words “Page Scaling” you have selected “None” to ensure your design/templates print out at 100%.

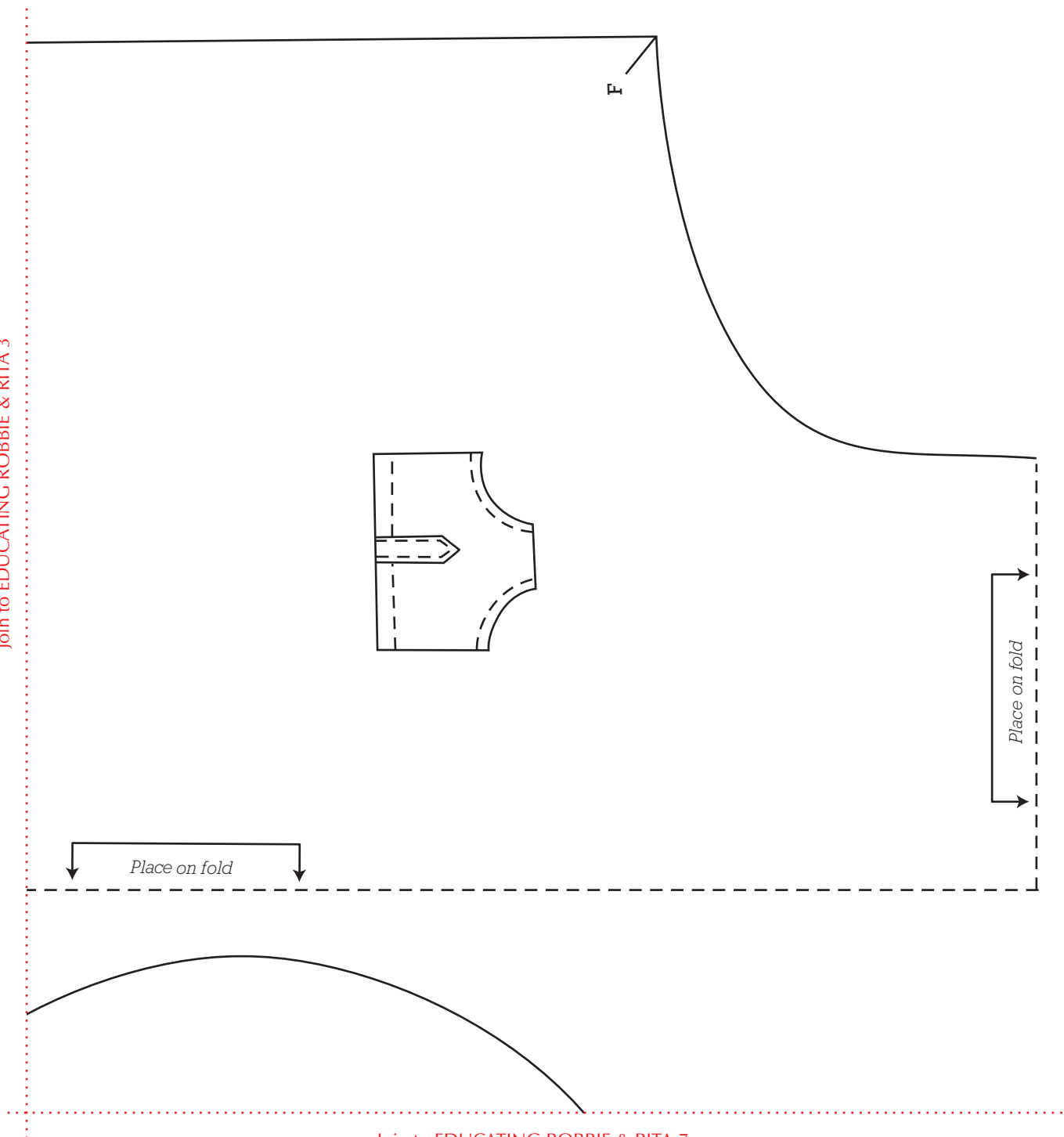


Join to EDUCATING ROBBIE & RITA 4

Join to EDUCATING ROBBIE & RITA 8

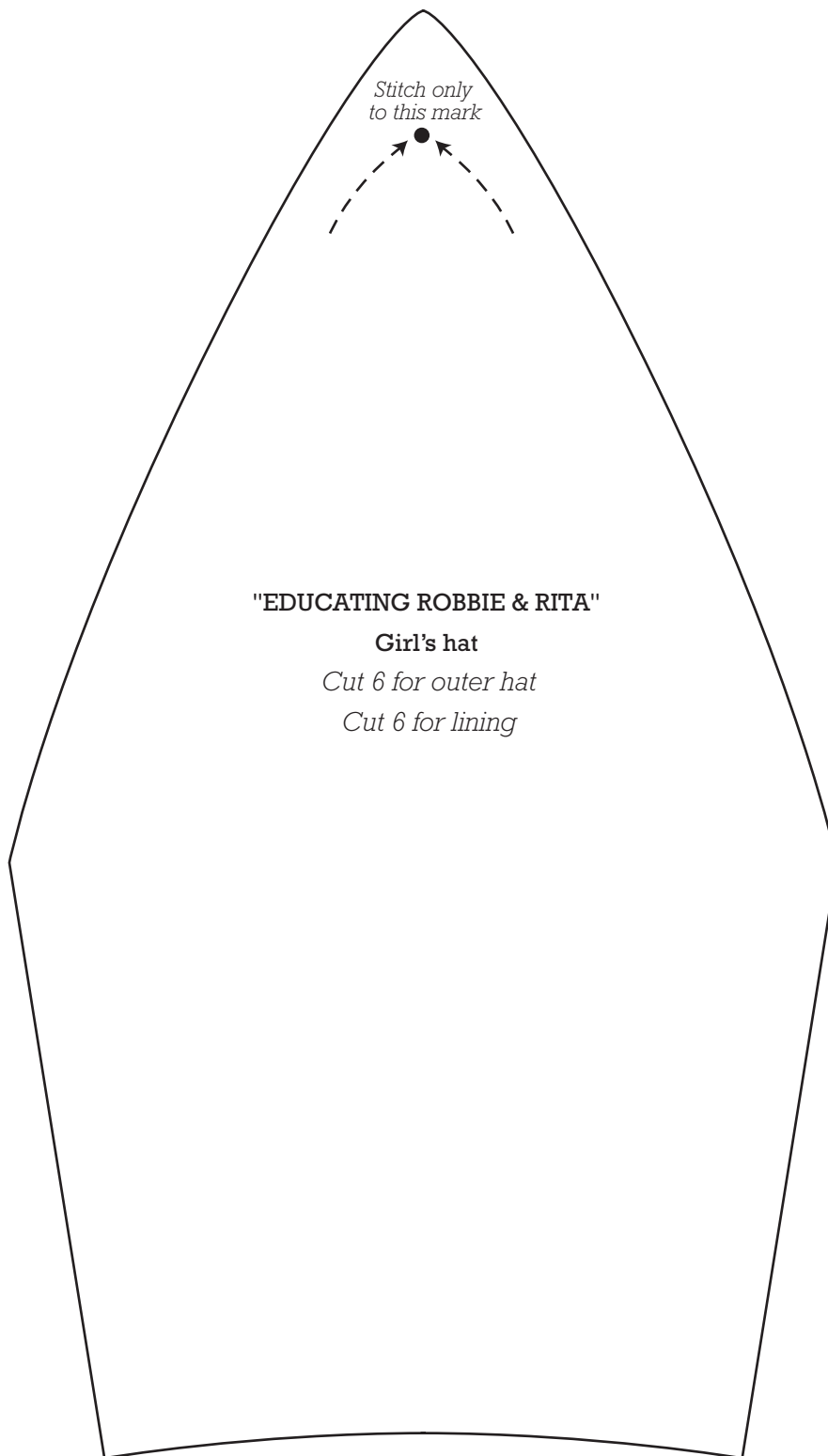
Print your chosen design/templates from the *Homespun* website. Before printing, check the Print dialog box – it is important that in the field next to the words “Page Scaling” you have selected “None” to ensure your design/templates print out at 100%.

Join to EDUCATING ROBBIE & RITA 3

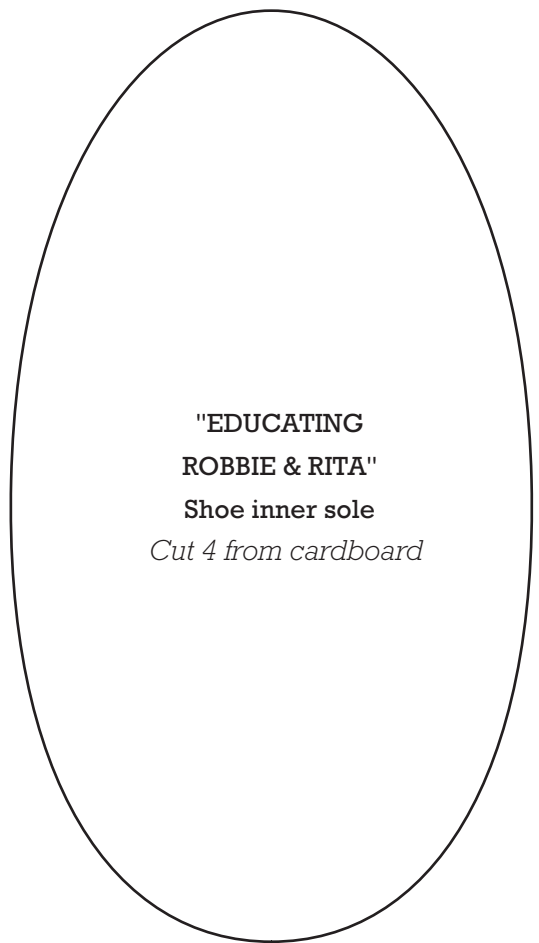
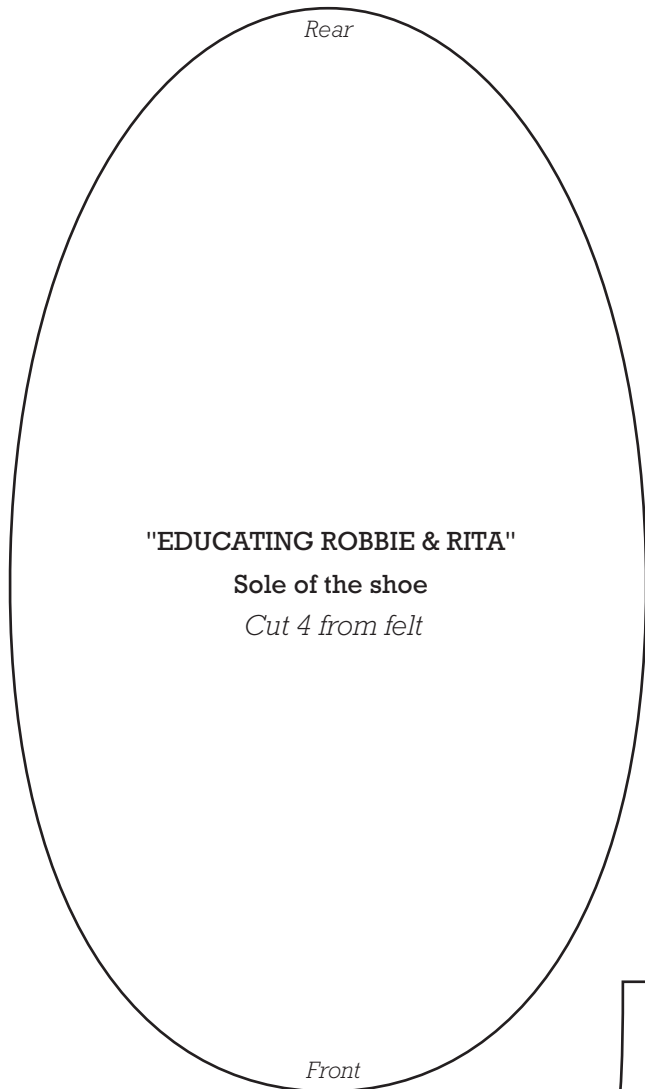


Join to EDUCATING ROBBIE & RITA 7

Print your chosen design/templates from the *Homespun* website. Before printing, check the Print dialog box – it is important that in the field next to the words “Page Scaling” you have selected “None” to ensure your design/templates print out at 100%.



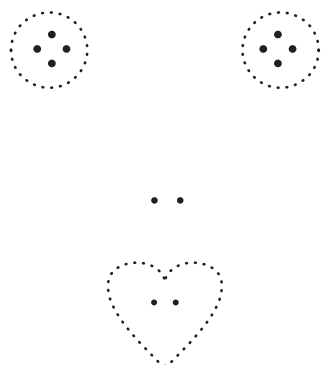
Print your chosen design/templates from the *Homespun* website. Before printing, check the Print dialog box – it is important that in the field next to the words “Page Scaling” you have selected “None” to ensure your design/templates print out at 100%.



Join to EDUCATING ROBBIE & RITA 7

Print your chosen design/templates from the *Homespun* website. Before printing, check the Print dialog box – it is important that in the field next to the words “Page Scaling” you have selected “None” to ensure your design/templates print out at 100%.

Join to EDUCATING ROBBIE & RITA 4



Arm placement

"EDUCATING ROBBIE & RITA"

Body

Cut 1 from doubled fabric for each doll

Leave open

Print your chosen design/templates from the *Homespun* website. Before printing, check the Print dialog box – it is important that in the field next to the words “Page Scaling” you have selected “None” to ensure your design/templates print out at 100%.

Join to EDUCATING ROBBIE & RITA 3

- PART 1

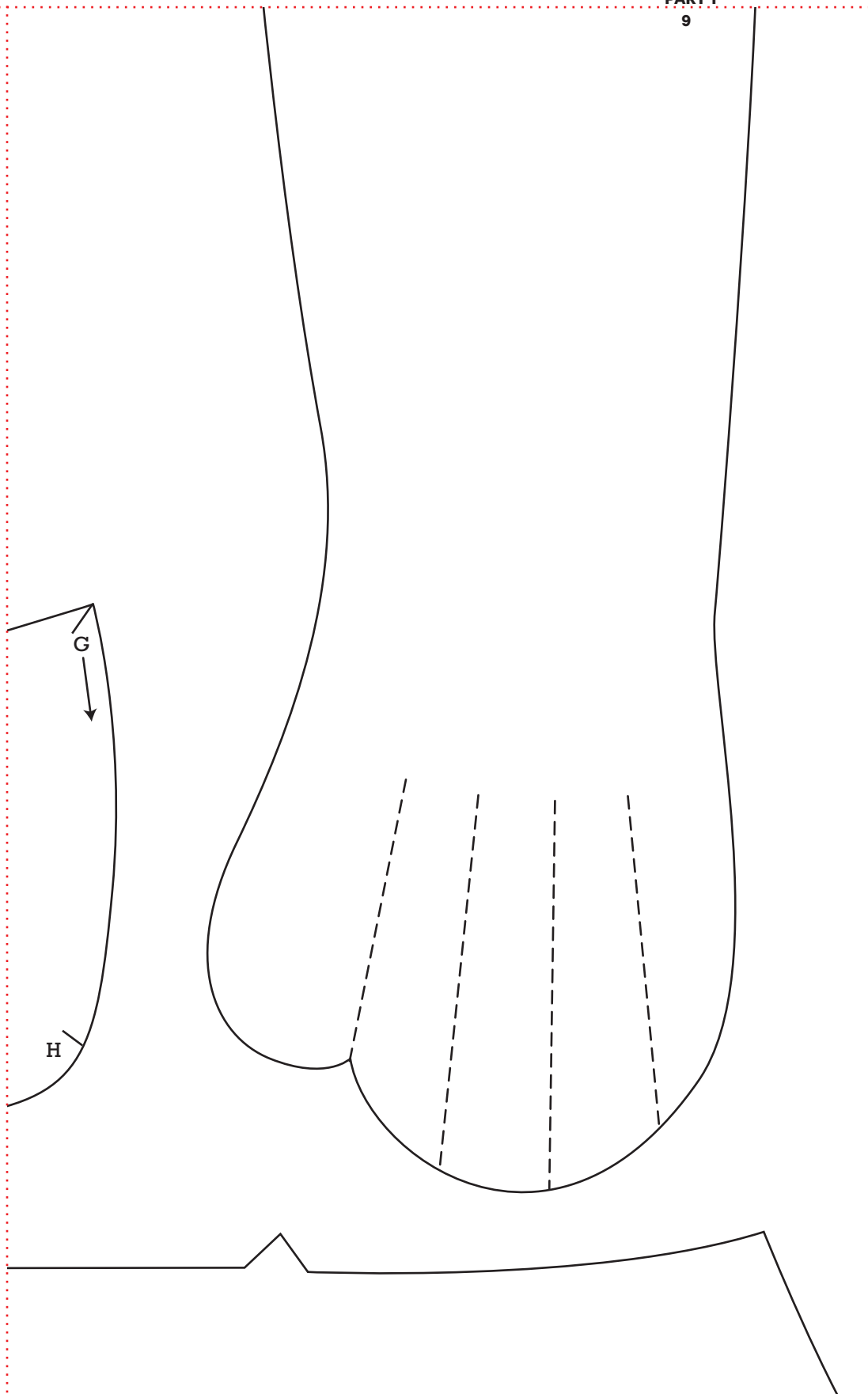
8

Join to EDUCATING ROBBIE & RITA 7

Print your chosen design/templates from the *Homespun* website. Before printing, check the Print dialog box – it is important that in the field next to the words “Page Scaling” you have selected “None” to ensure your design/templates print out at 100%.

Join to EDUCATING ROBBIE & RITA 2

Join to EDUCATING ROBBIE & RITA 10

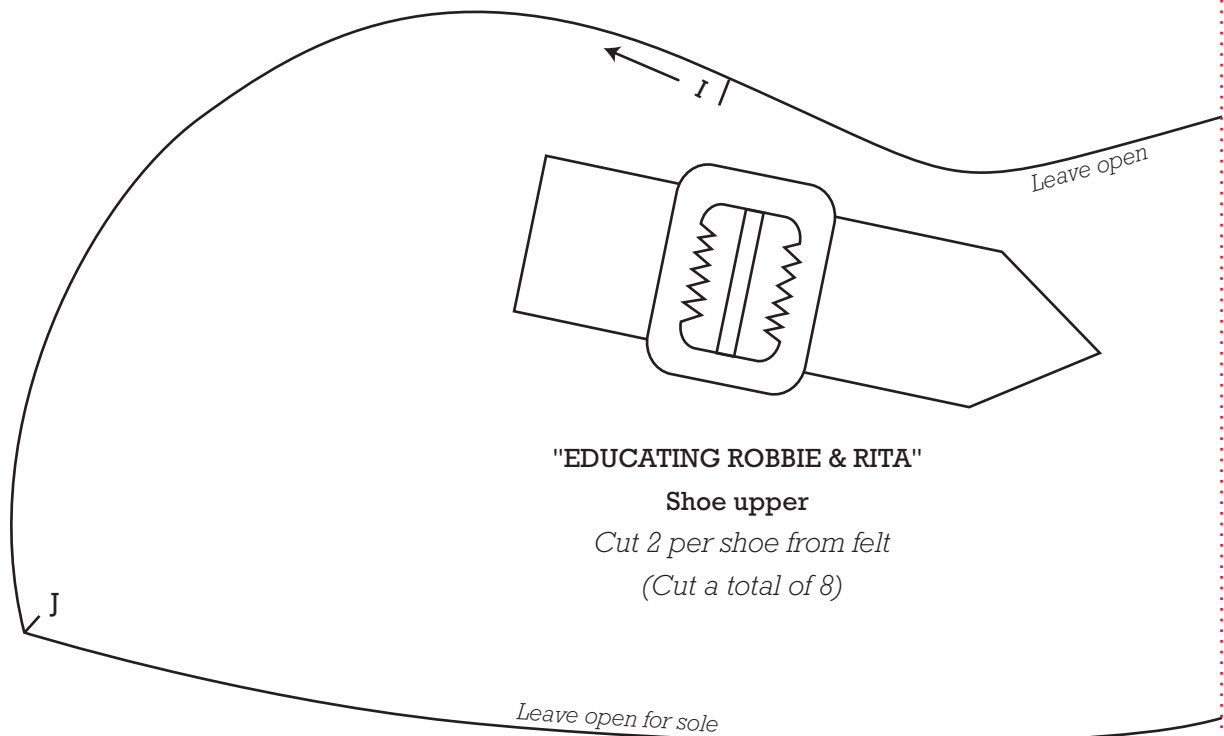


Print your chosen design/templates from the *Homespun* website. Before printing, check the Print dialog box – it is important that in the field next to the words “Page Scaling” you have selected “None” to ensure your design/templates print out at 100%.

Join to EDUCATING ROBBIE & RITA 1

- PART 1

10



Join to EDUCATING ROBBIE & RITA 9

Print your chosen design/templates from the *Homespun* website. Before printing, check the Print dialog box – it is important that in the field next to the words “Page Scaling” you have selected “None” to ensure your design/templates print out at 100%.

Join to EDUCATING ROBBIE & RITA 10

Join to EDUCATING ROBBIE & RITA 12

Print your chosen design/templates from the *Homespun* website. Before printing, check the Print dialog box – it is important that in the field next to the words “Page Scaling” you have selected “None” to ensure your design/templates print out at 100%.

Join to EDUCATING ROBBIE & RITA 9

Join to EDUCATING ROBBIE & RITA 11

"EDUCATING ROBBIE & RITA"
Sleeve
Cut 2 from doubled fabric

Print your chosen design/templates from the *Homespun* website. Before printing, check the Print dialog box – it is important that in the field next to the words “Page Scaling” you have selected “None” to ensure your design/templates print out at 100%.

Join to EDUCATING ROBBIE & RITA 8

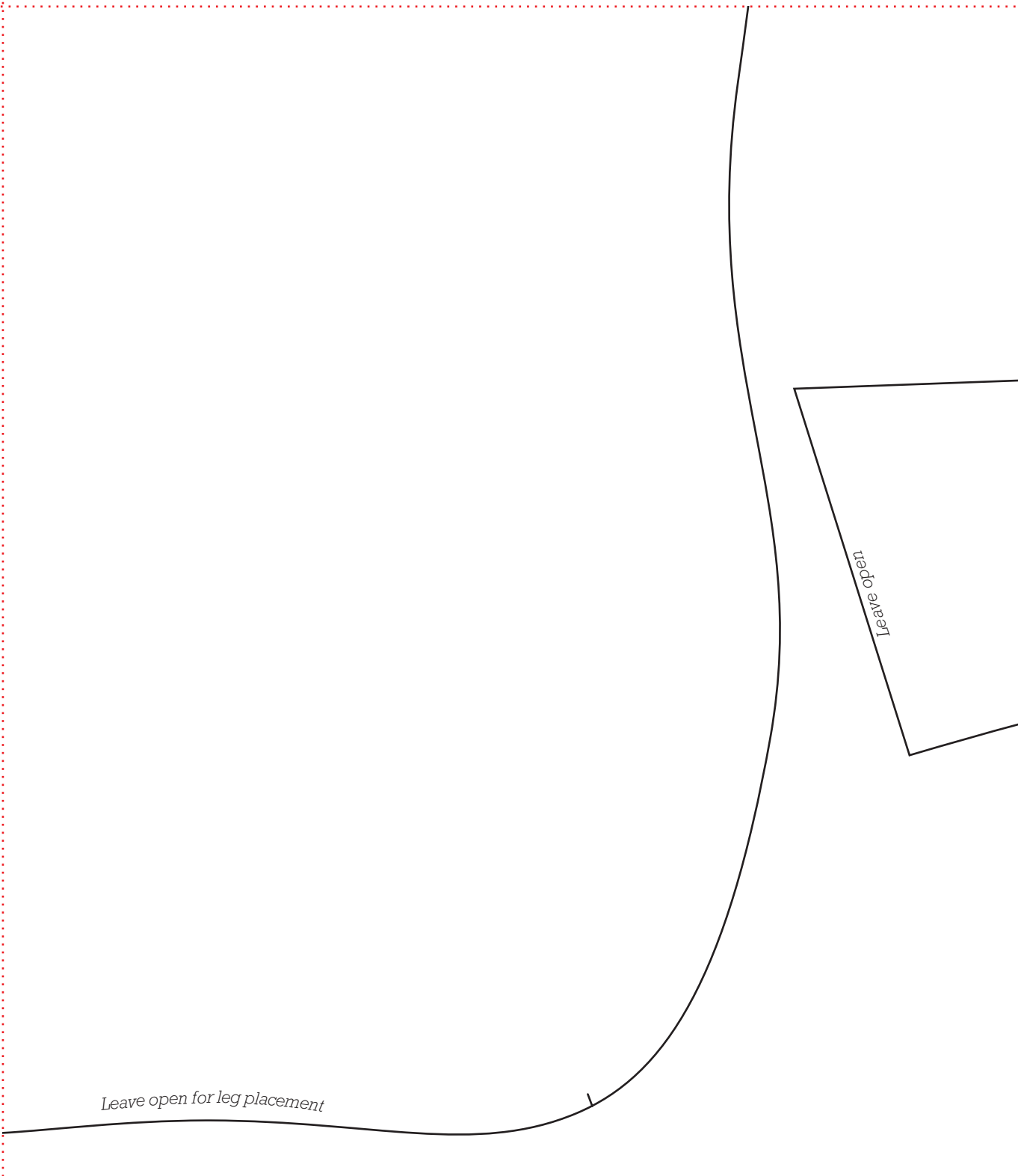
"EDUCATING ROBBIE & RITA"
Tie
Cut 2 for each doll

Join to EDUCATING ROBBIE & RITA 14

Print your chosen design/templates from the *Homespun* website. Before printing, check the Print dialog box – it is important that in the field next to the words “Page Scaling” you have selected “None” to ensure your design/templates print out at 100%.

Join to EDUCATING ROBBIE & RITA 7

Join to EDUCATING ROBBIE & RITA 13



Join to EDUCATING ROBBIE & RITA 15

Print your chosen design/templates from the *Homespun* website. Before printing, check the Print dialog box – it is important that in the field next to the words “Page Scaling” you have selected “None” to ensure your design/templates print out at 100%.

