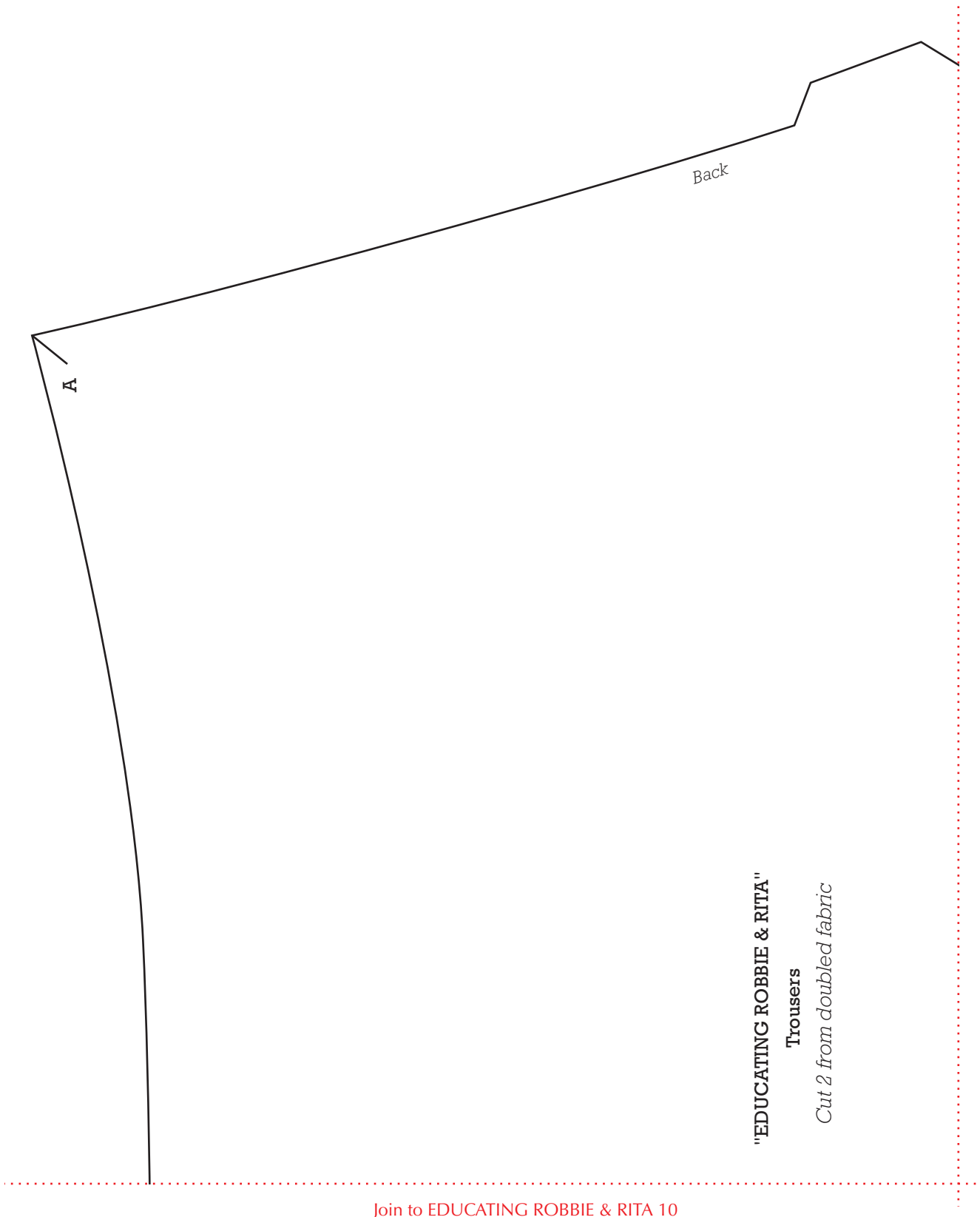


Print your chosen design/templates from the *Homespun* website. Before printing, check the Print dialog box – it is important that in the field next to the words “Page Scaling” you have selected “None” to ensure your design/templates print out at 100%.



**"EDUCATING ROBBIE & RITA"**

**Trousers**

*Cut 2 from doubled fabric*

Print your chosen design/templates from the *Homespun* website. Before printing, check the Print dialog box – it is important that in the field next to the words “Page Scaling” you have selected “None” to ensure your design/templates print out at 100%.

your heart in your hands  
**Homespun**

Copyright Universal Magazines  
Homespun Vol.16 No.10 Issue 149

**EDUCATING ROBBIE & RITA**

**- PART 2**

**2**

Join to EDUCATING ROBBIE & RITA 1

Join to EDUCATING ROBBIE & RITA 3

Join to EDUCATING ROBBIE & RITA 9

Print your chosen design/templates from the *Homespun* website. Before printing, check the Print dialog box – it is important that in the field next to the words “Page Scaling” you have selected “None” to ensure your design/templates print out at 100%.

your heart in your hands  
**Homespun**

Copyright Universal Magazines  
Homespun Vol.16 No.10 Issue 149  
**EDUCATING ROBBIE & RITA**

**- PART 2**

**3**

Join to EDUCATING ROBBIE & RITA 2

Join to EDUCATING ROBBIE & RITA 4

Join to EDUCATING ROBBIE & RITA 8

Print your chosen design/templates from the *Homespun* website. Before printing, check the Print dialog box – it is important that in the field next to the words “Page Scaling” you have selected “None” to ensure your design/templates print out at 100%.

Join to EDUCATING ROBBIE & RITA 3

*Waist*

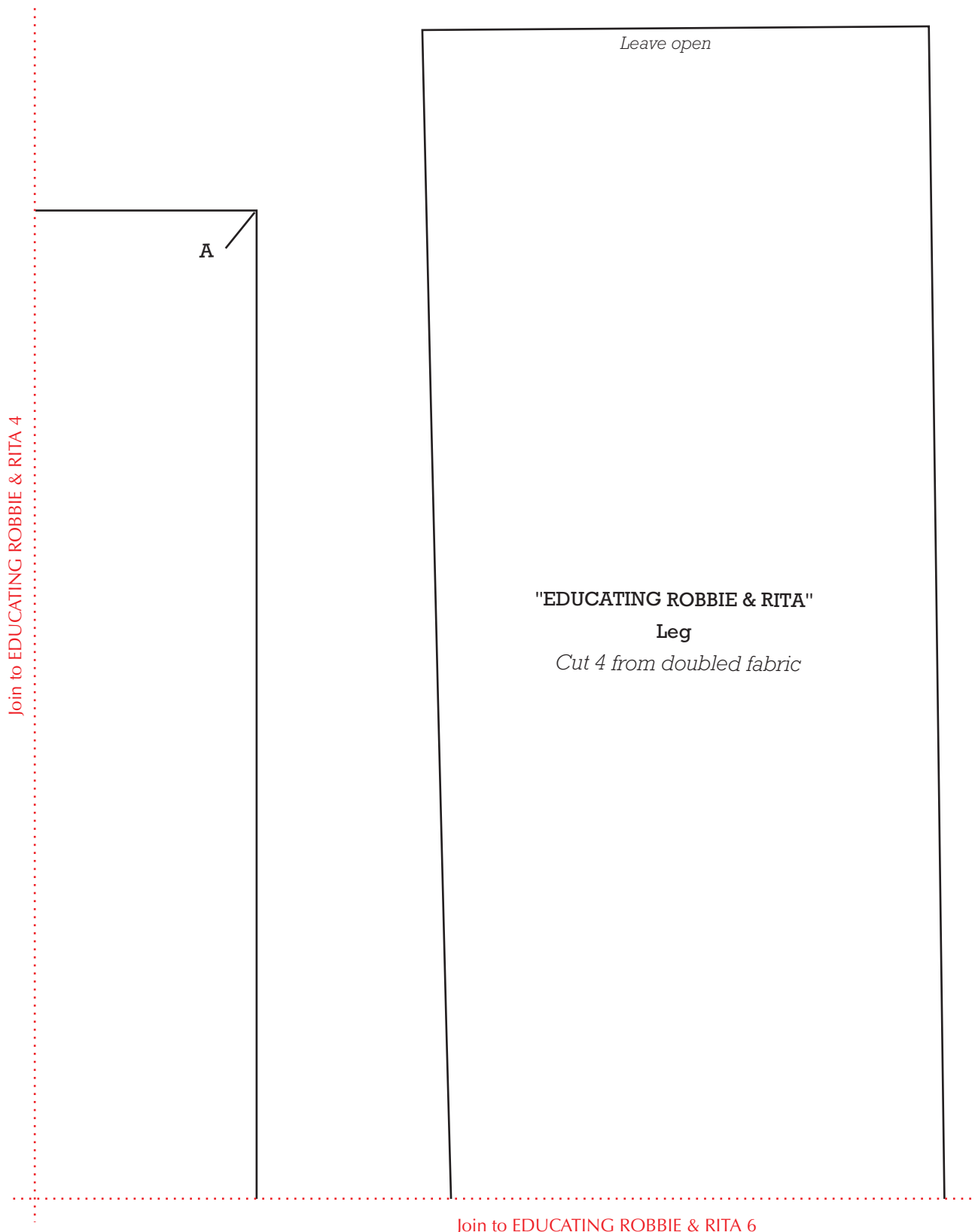
Join to EDUCATING ROBBIE & RITA 5

*Leave pocket top open*

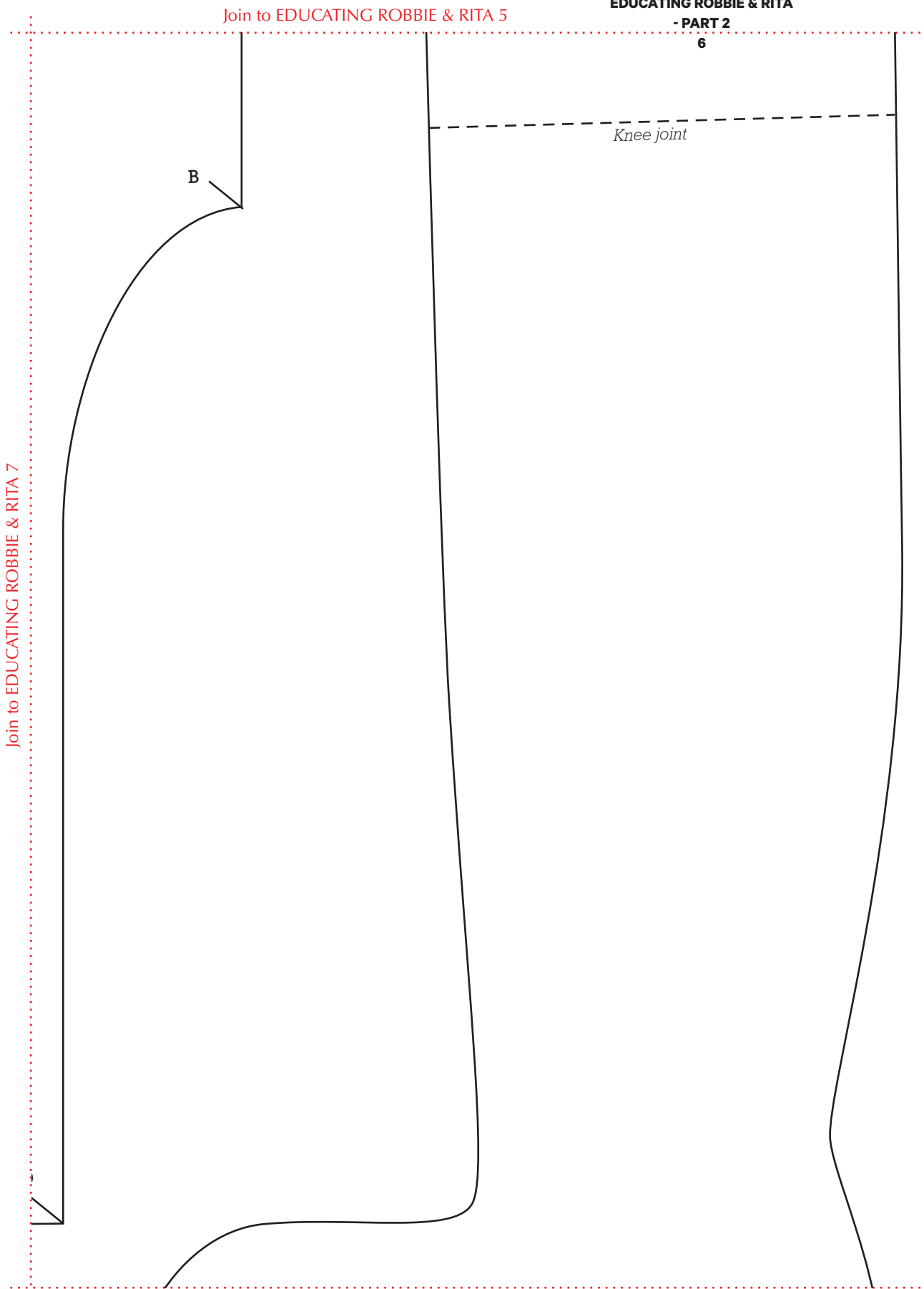
**Girl's bloomers pocket**

Join to EDUCATING ROBBIE & RITA 7

Print your chosen design/templates from the *Homespun* website. Before printing, check the Print dialog box – it is important that in the field next to the words “Page Scaling” you have selected “None” to ensure your design/templates print out at 100%.



Print your chosen design/templates from the *Homespun* website. Before printing, check the Print dialog box – it is important that in the field next to the words “Page Scaling” you have selected “None” to ensure your design/templates print out at 100%.



Print your chosen design/templates from the *Homespun* website. Before printing, check the Print dialog box – it is important that in the field next to the words “Page Scaling” you have selected “None” to ensure your design/templates print out at 100%.

Join to EDUCATING ROBBIE & RITA 4



Join to EDUCATING ROBBIE & RITA 8

Join to EDUCATING ROBBIE & RITA 6

**"EDUCATING ROBBIE & RITA"**

**Girl's bloomers**

*Cut 2 on the fold*

C / D  
s

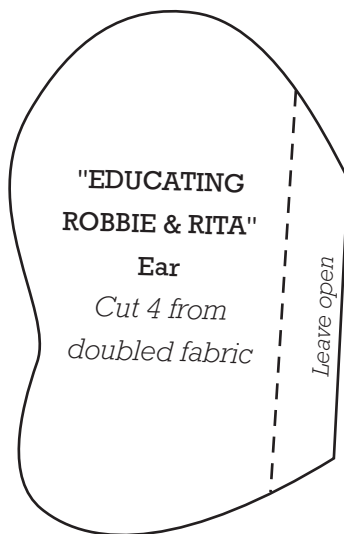
Print your chosen design/templates from the *Homespun* website. Before printing, check the Print dialog box – it is important that in the field next to the words “Page Scaling” you have selected “None” to ensure your design/templates print out at 100%.

Join to EDUCATING ROBBIE & RITA 3

Place on fold

Join to EDUCATING ROBBIE & RITA 9

Join to EDUCATING ROBBIE & RITA 7



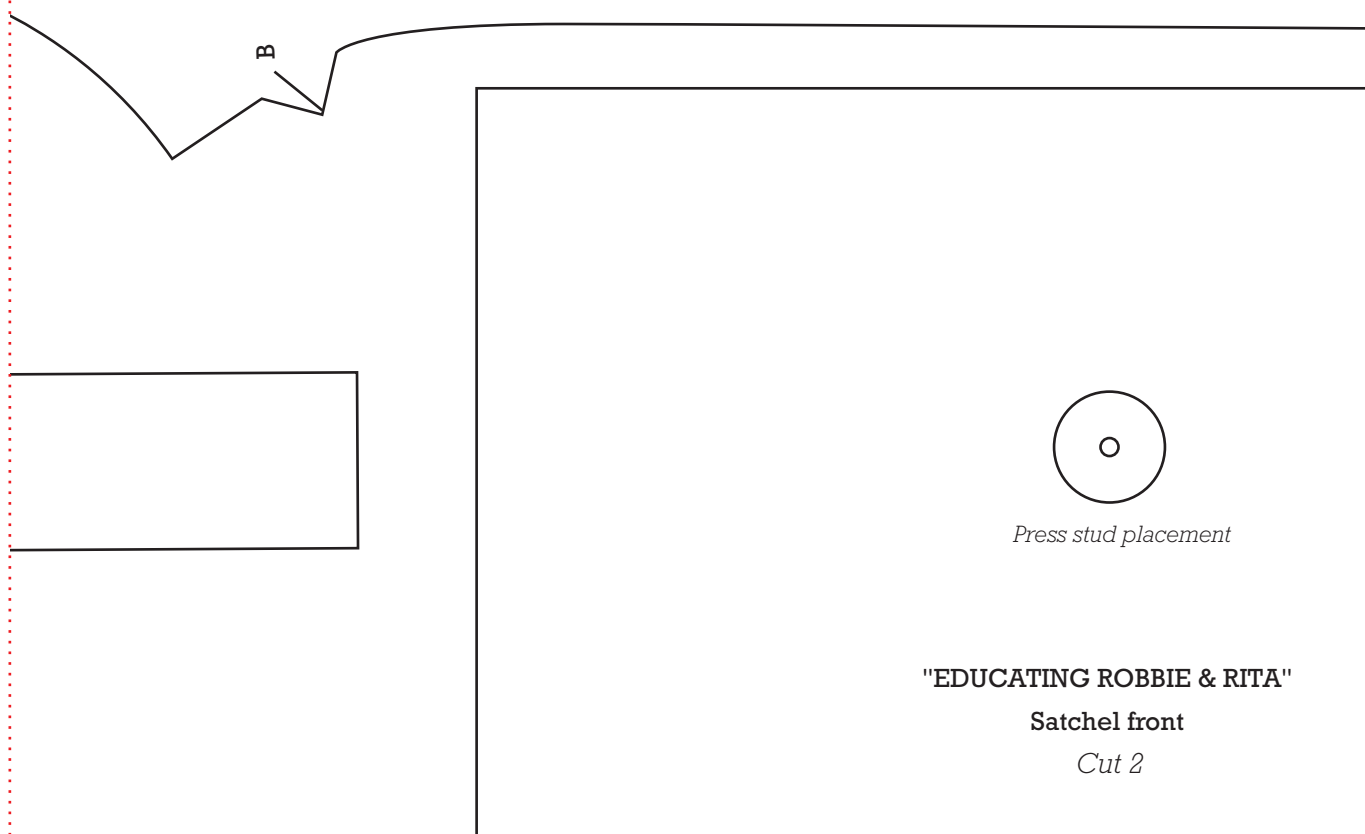


Print your chosen design/templates from the *Homespun* website. Before printing, check the Print dialog box – it is important that in the field next to the words “Page Scaling” you have selected “None” to ensure your design/templates print out at 100%.

Join to EDUCATING ROBBIE & RITA 2

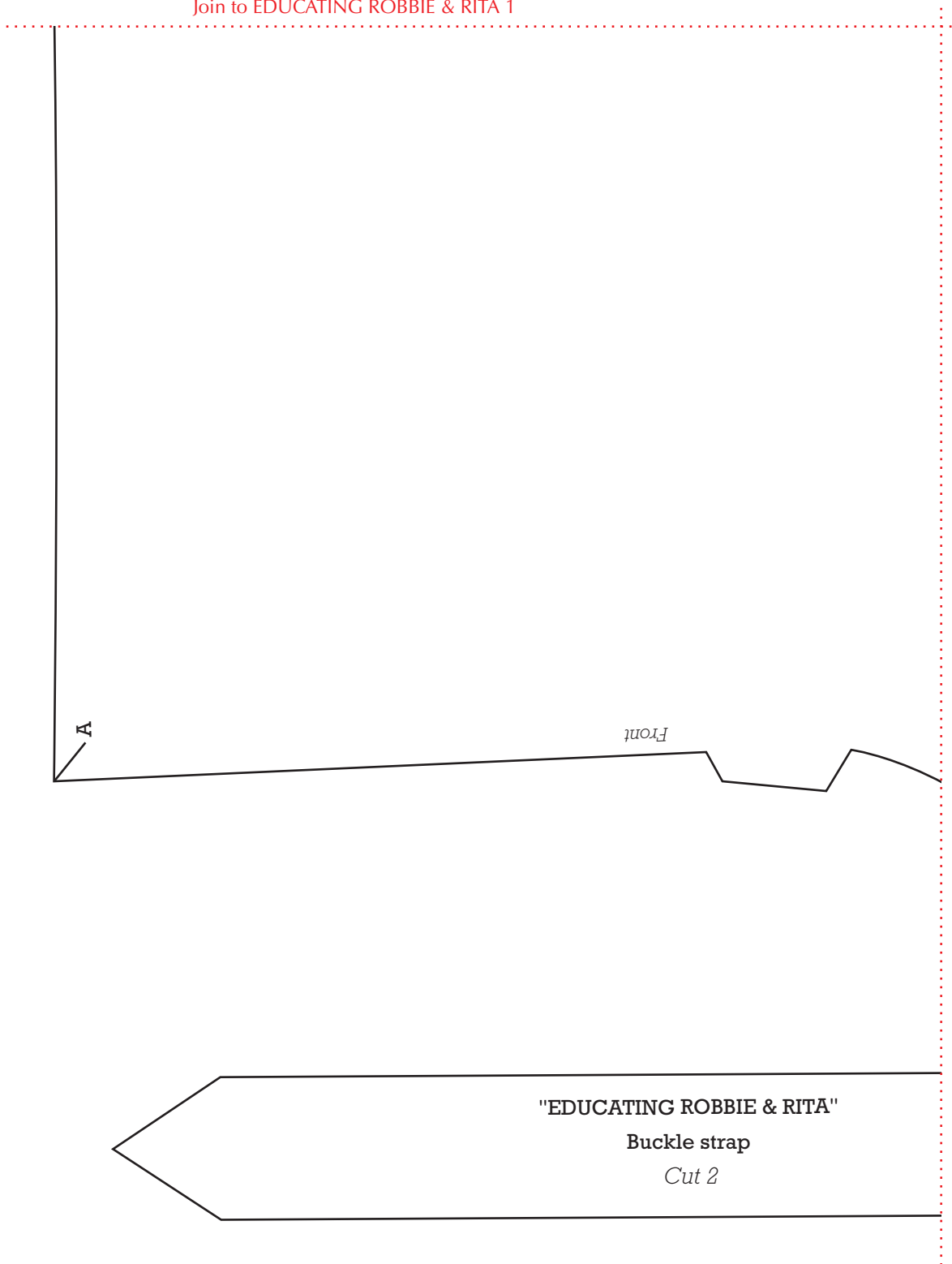
Join to EDUCATING ROBBIE & RITA 10

Join to EDUCATING ROBBIE & RITA 8



Print your chosen design/templates from the *Homespun* website. Before printing, check the Print dialog box – it is important that in the field next to the words “Page Scaling” you have selected “None” to ensure your design/templates print out at 100%.

Join to EDUCATING ROBBIE & RITA 1

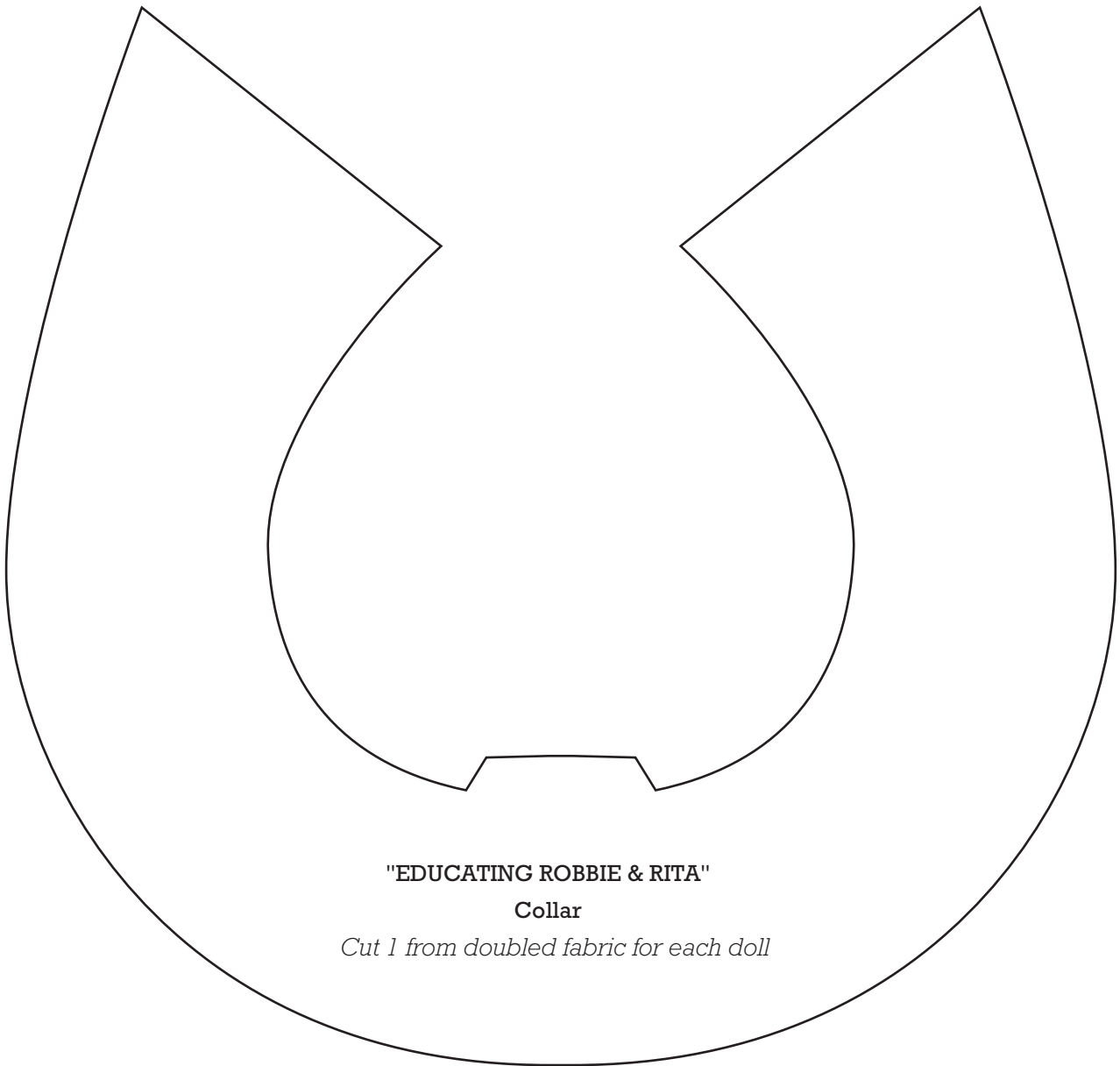


**"EDUCATING ROBBIE & RITA"**

**Buckle strap**

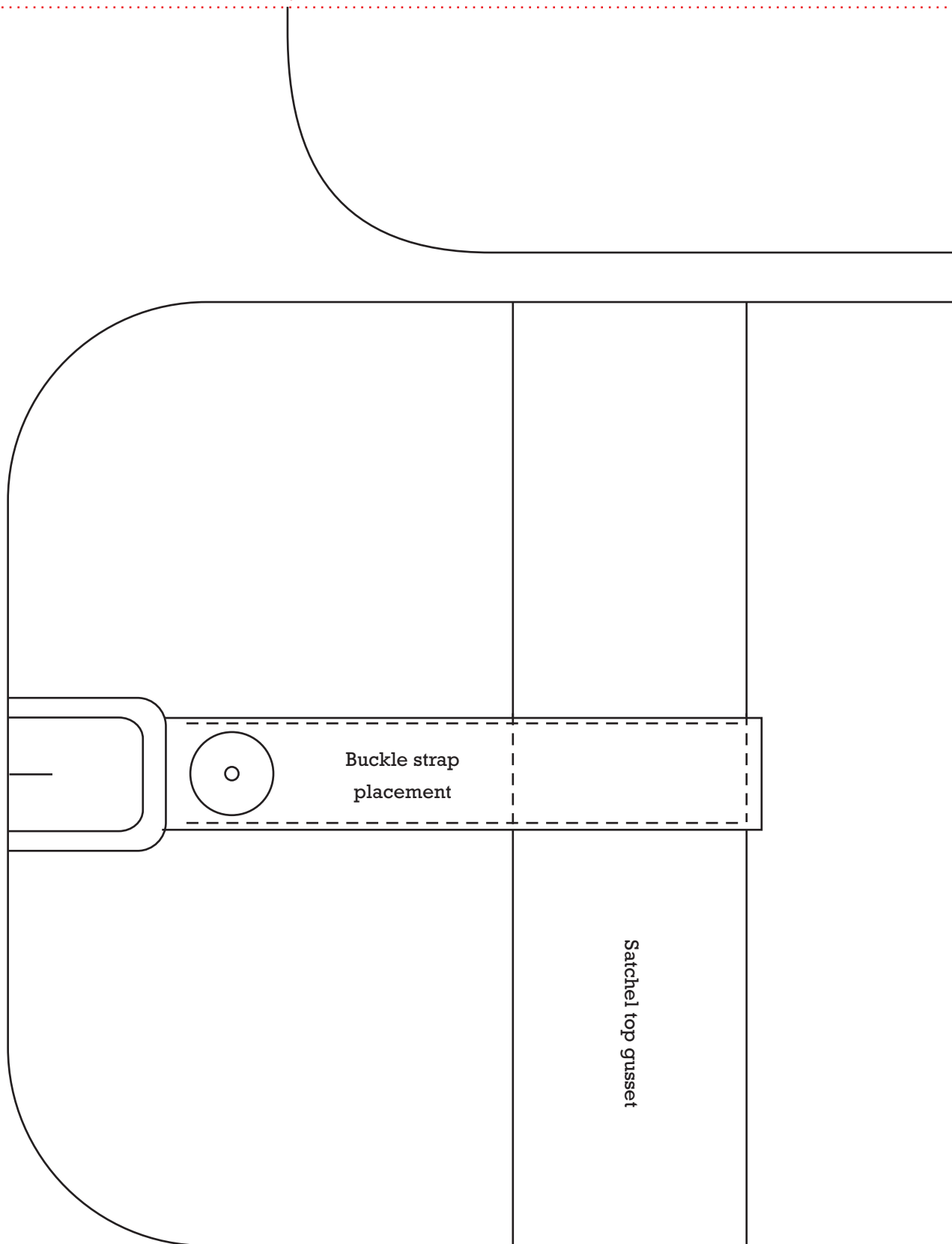
*Cut 2*

Print your chosen design/templates from the *Homespun* website. Before printing, check the Print dialog box – it is important that in the field next to the words “Page Scaling” you have selected “None” to ensure your design/templates print out at 100%.



Print your chosen design/templates from the *Homespun* website. Before printing, check the Print dialog box – it is important that in the field next to the words “Page Scaling” you have selected “None” to ensure your design/templates print out at 100%.

Join to EDUCATING ROBBIE & RITA 9



Join to EDUCATING ROBBIE & RITA 13

Print your chosen design/templates from the *Homespun* website. Before printing, check the Print dialog box – it is important that in the field next to the words “Page Scaling” you have selected “None” to ensure your design/templates print out at 100%.

Join to EDUCATING ROBBIE & RITA 8

Join to EDUCATING ROBBIE & RITA 12

"EDUCATING ROBBIE & RITA"  
Satchel back  
*Cut 2*

Join to EDUCATING ROBBIE & RITA 14

Print your chosen design/templates from the *Homespun* website. Before printing, check the Print dialog box – it is important that in the field next to the words “Page Scaling” you have selected “None” to ensure your design/templates print out at 100%.

Join to EDUCATING ROBBIE & RITA 13

Join to EDUCATING ROBBIE & RITA 15

**"EDUCATING ROBBIE & RITA"**  
Shirt front  
Cut 2 from doubled fabric

*Central button line*

*Fold line*

Print your chosen design/templates from the *Homespun* website. Before printing, check the Print dialog box – it is important that in the field next to the words “Page Scaling” you have selected “None” to ensure your design/templates print out at 100%.

Join to EDUCATING ROBBIE & RITA 6

Join to EDUCATING ROBBIE & RITA 14

