

Cross and half-cross stitch

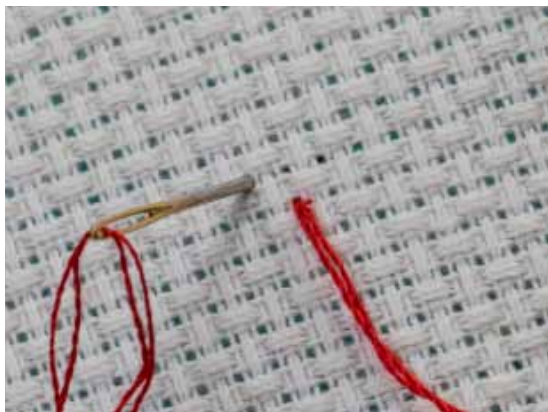
LEFT-HANDED



1 Counted cross stitch is worked on an evenweave fabric (left) or Aida cloth (right). Tapestry needles have a long eye and blunt point and also come in a double-ended type.



2 To begin, fold a long single strand of thread in half and thread both ends in the needle. Come up at the bottom right of the first stitch and go down two threads up and across.



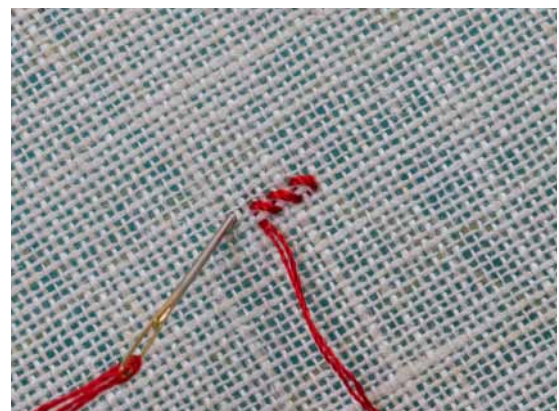
3 On Aida cloth, whole stitches are worked in the holes between the squares – you don't need to count up and across two threads in each direction.



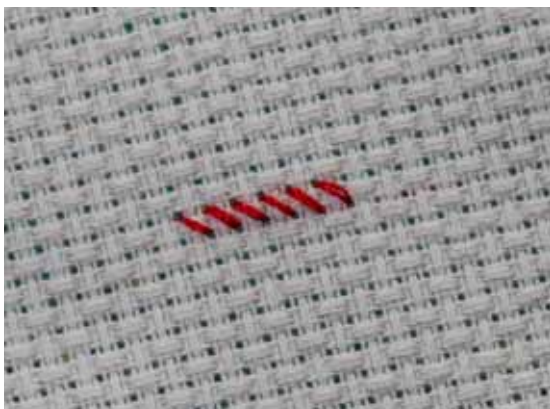
4 The first half-cross stitch on linen. Don't pull the thread all the way through yet though! The end still needs to be secured at the back.



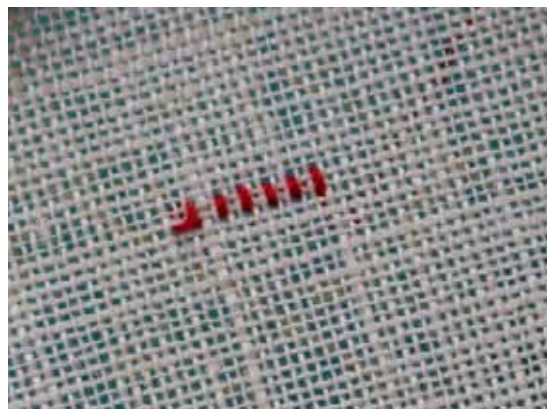
5 Turn over to the back and take the needle through the loop of thread. Pull it until the stitch is sitting snug. This is a neat way to start when there are no stitches to go under.



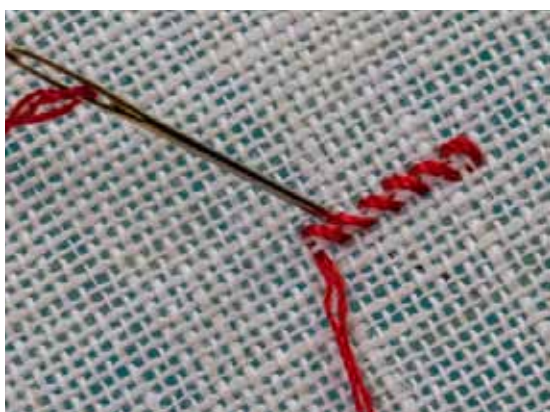
6 Unless you're doing an isolated full cross stitch, continue to work half-cross stitches along in a line of one colour as shown on your graph.



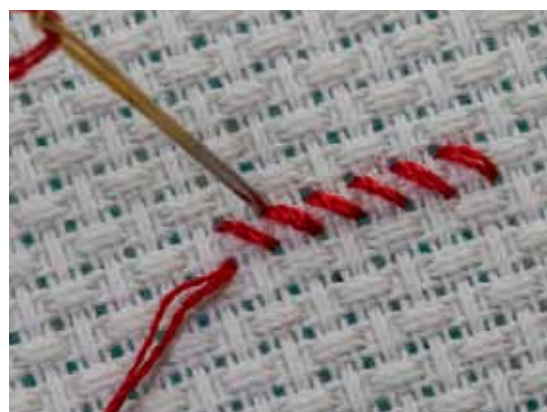
7 Six half-cross stitches on Aida cloth. Half-cross stitch is sometimes used in designs to give a lighter shading to an area or smoother edges to curves (can lie either way).



8 The back of the work shows only vertical stitches (except for the first stitch). Apart from moving from one line to the next, all the stitches on the back should be vertical.



9 At the end of the first journey, begin crossing the half stitches to make full cross stitches. This time, the stitches go from bottom left to top right over the same threads.



10 Making a full cross stitch on Aida cloth. Depending on the graph, cross stitch can also be worked in vertical columns or as single, isolated stitches.



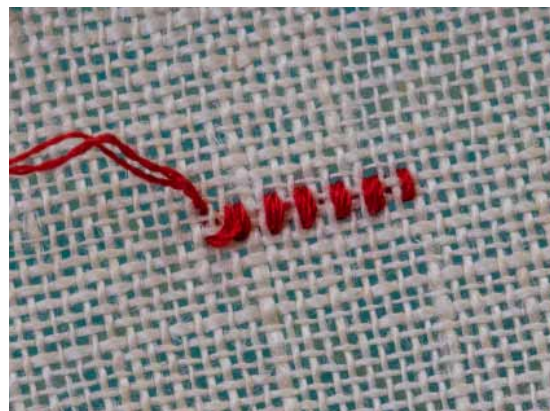
11 One complete cross stitch and five half-cross stitches on linen fabric. Working in journeys of several stitches is efficient and helps to keep the back neat.



12 Completed second journey of six full cross stitches on linen evenweave fabric. To begin another row directly below, come up four threads down from the last entry point.



13 Completed second journey of full cross stitches on Aida cloth. All the top stitches should lie the same way on a project, but it doesn't matter which way.



14 The back of the work shows doubled vertical stitches with the thread at the back ready to end off. If you're continuing, bring the thread up at the start of the next stitch.



15 To finish, take the needle under the vertical stitches at the back, pull the thread through and trim the end. You can start subsequent colours or threads the same way.